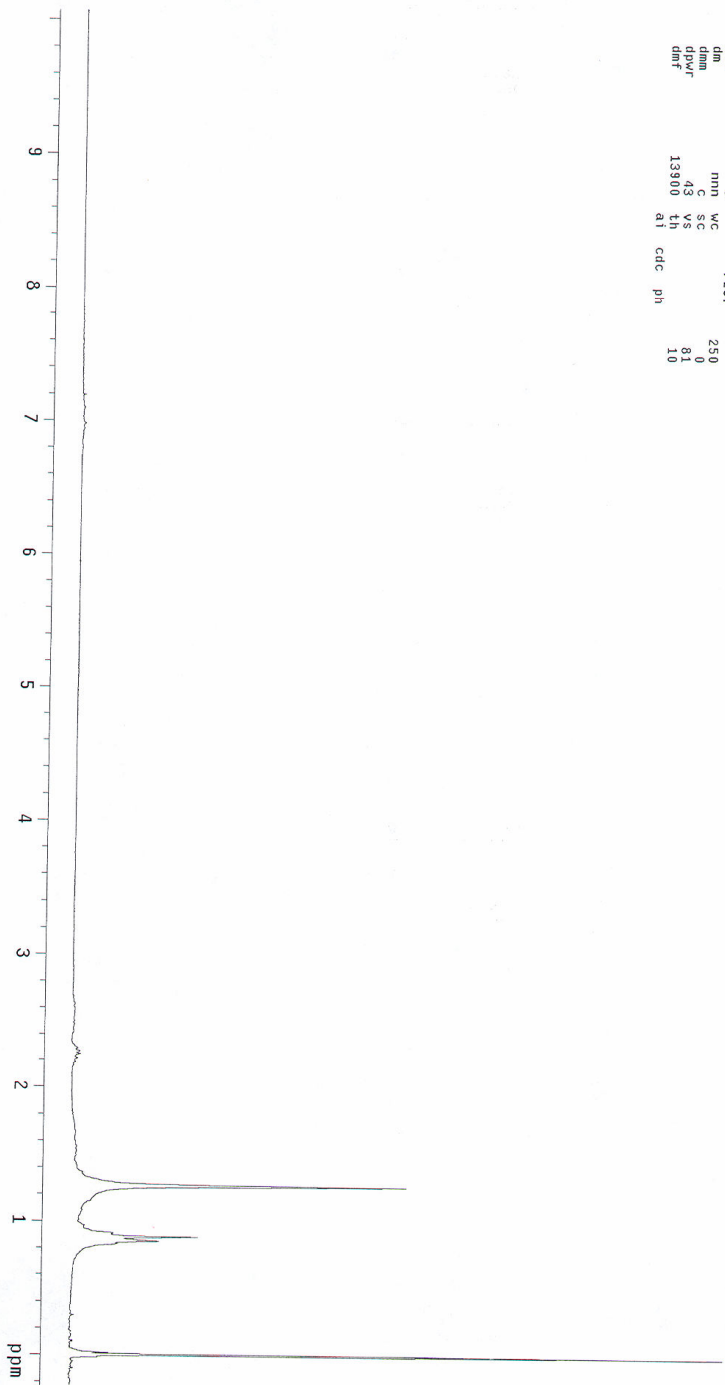


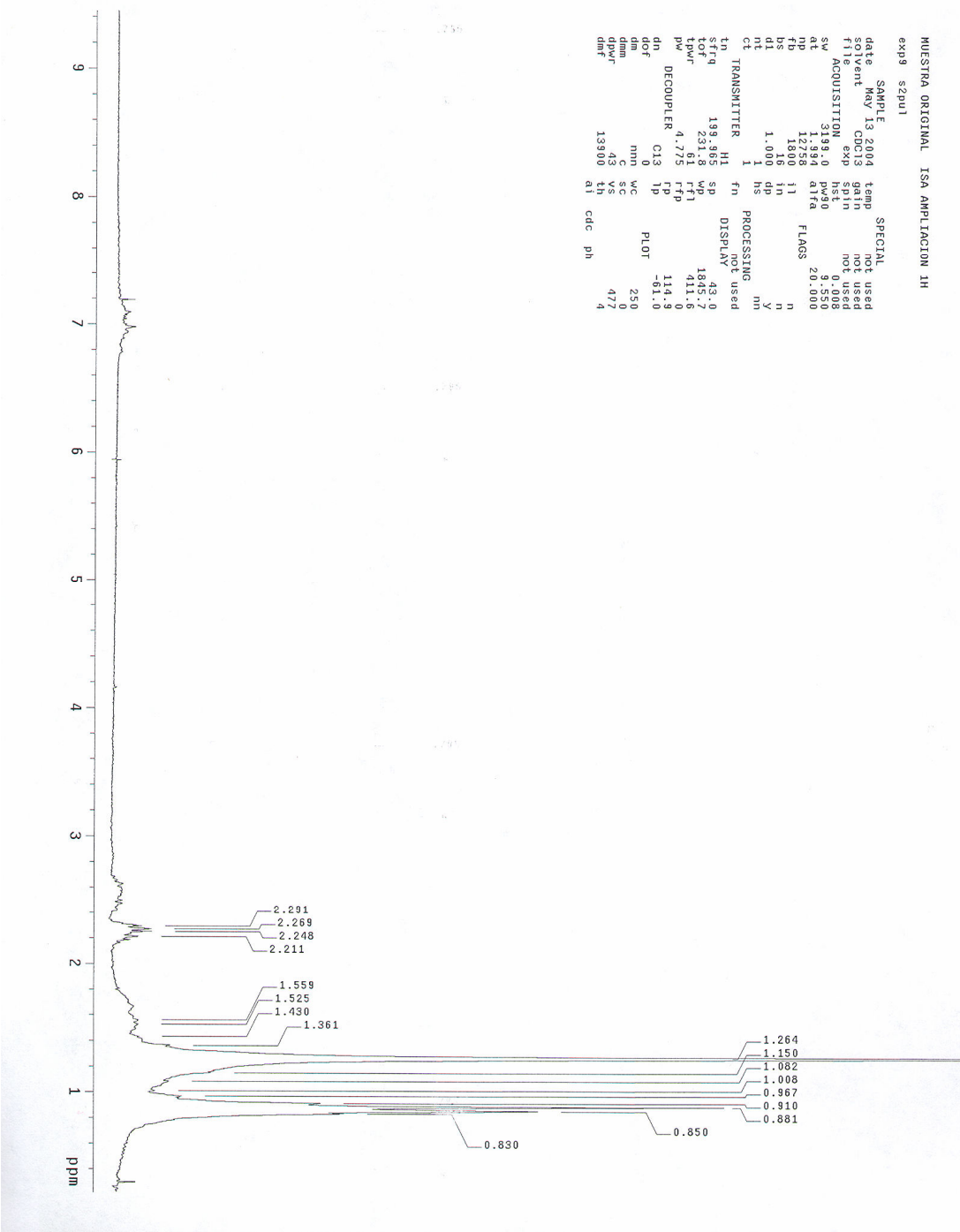


APÉNDICE D

MUESTRA ORIGINAL ISA 1H
exp9 s2pul1

SAMPLE		SPECIAL	
date	May 13 2004	tamp	not used
solvent	CDCl3	gain	not used
file		spin	not used
ACQUISITION			
sw	3199.0	pw90	0.008
ns	12754	atfa	9.550
fb	1800	flags	20.000
bs	16	in	n
d1	1.000	dp	n
nt	1	hs	y
ct	TRANSMITTER	fn	not used
tn	H1	DISPLN	-46.1
sfrq	199.965	SP	2059.7
lof	231.8	WP	411.6
tpwr	61	rfl	114.9
pw	4.775	rff	-61.0
DECOUPLER			
dn	C13	tp	114.9
dof	0		-61.0
dm	mm	WC	250
dmm	C	SC	0
dpwr	43	VS	81
dmf	13900	th	10
	al	cdc	ph





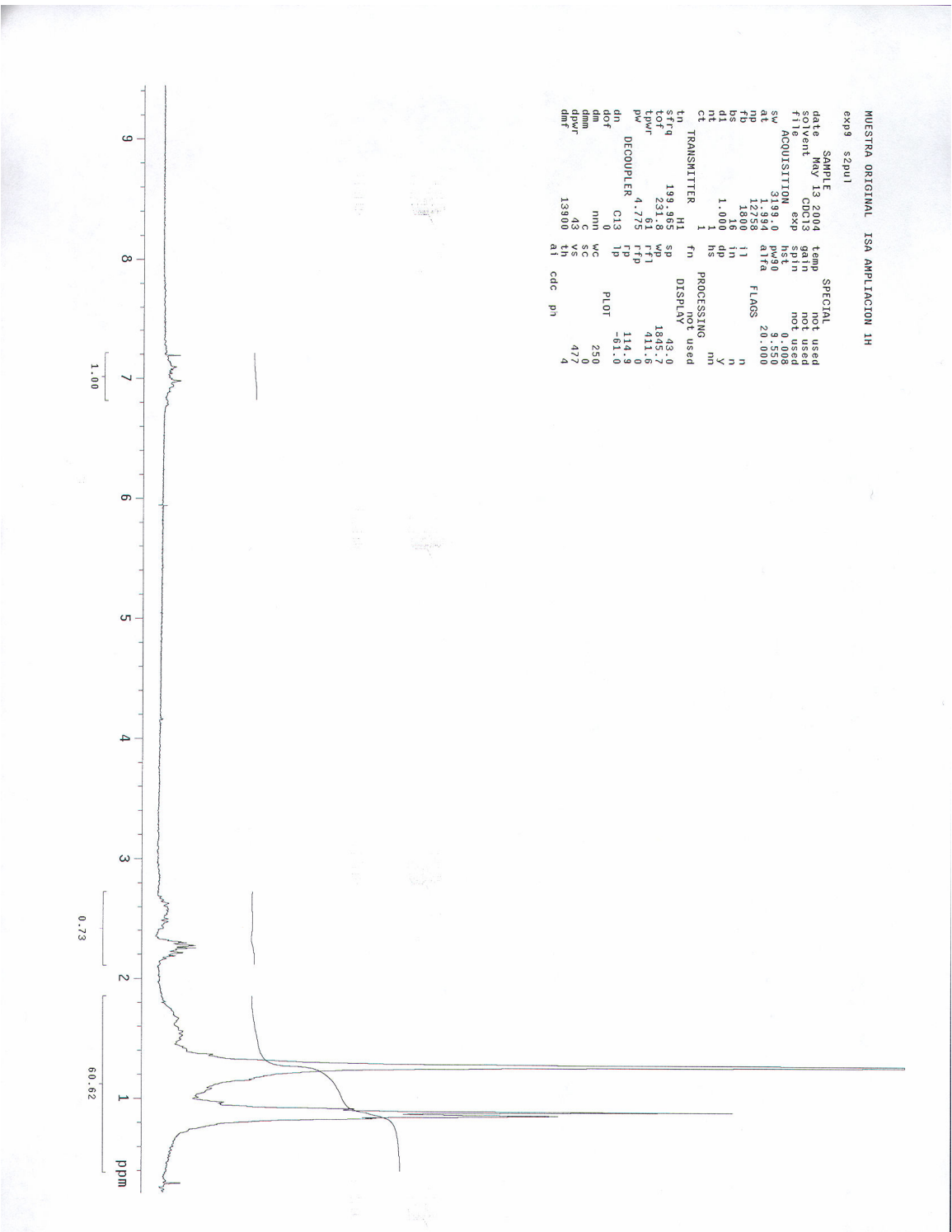
MUESTRA ORIGINAL ISA AMPLIACION 1H
exp9 s2pul1

PARAMETER	VALUE	UNIT	DESCRIPTION
date	May 13 2004		SAMPLE
solvent	CDC13		SOLVENT
temp			TEMP
gain			GAIN
not used			NOT USED
rl			RELAXATION
exp			EXP
spin			SPIN
not used			NOT USED
sw	31499.0	Hz	SW
pw	8.550	μs	PULSE WIDTH
at	1.994	μs	AT
atfa	20.000	μs	ATFA
flags			FLAGS
np	12758		NUMBER OF POINTS
ns	1000		NUMBER OF SCANS
ds	1		DELTA S
dt	1.000	ms	DELTA T
nt	1		NUMBER OF TRANSFORMS
ct	1		CYCLES
transmitter	H1		TRANSMITTER
fn			FUNCTION
not used			NOT USED
th			THRESHOLD
h1			H1
disp			DISPLAY
not used			NOT USED
sfreq	199.965	MHz	SFREQ
sp	43.0	dB	SENSITIVITY
tof	231.8	ms	TOF
wp	1845.7	Hz	WINDOW POSITION
ftl	411.6	Hz	FTL
lpw	4.775	Hz	LOW PASS FILTER
fd	114.9	Hz	FREQUENCY DELTA
decoupler	C13		DECOUPLER
lp			LOW PASS FILTER
plot			PLOT
not used			NOT USED
dn	0		DELTA N
dof			DELTA OF
dm			DELTA M
mm			MINIMUM
wc			WORKING
vc			VARIABLE
vs			VARIABLE
dpwr	43	dB	DELTA POWER
th	13900	Hz	THRESHOLD
at			AT
cdc			CDC
ph			PHASE



MUESTRA ORIGINAL ISA AMPLIACION 1H
exp9 szpul1

date	SAMPLE	temp	SPECIAL
May 13 2004			not used
ent	CD3	grin	not used
ft112	exp	hst1	not used
ACQUISITION		hst1	0.008
sw	3193.0	pw90	9.550
at	1.984	alfa	20.000
fd	1.724		n
bs	1.600	in	n
d1	1.600	dp	hs
nt	1	hs	not used
ct			
th	TRANSMITTER	H1	fn
st			not used
stf1q	193.985	sp	DISP
tot	231.3	wp	43.0
zoff	4.775	rfp	1845.7
pw	4.775	rfp	941.0
DECOUPLER		tp	114.9
dn	C13	tp	-61.0
dof	0	vc	PL0T
ddp	0	mc	250
dm	43	sc	0
dpwr	13900	th	477
dnr		at	cdc
		pn	4



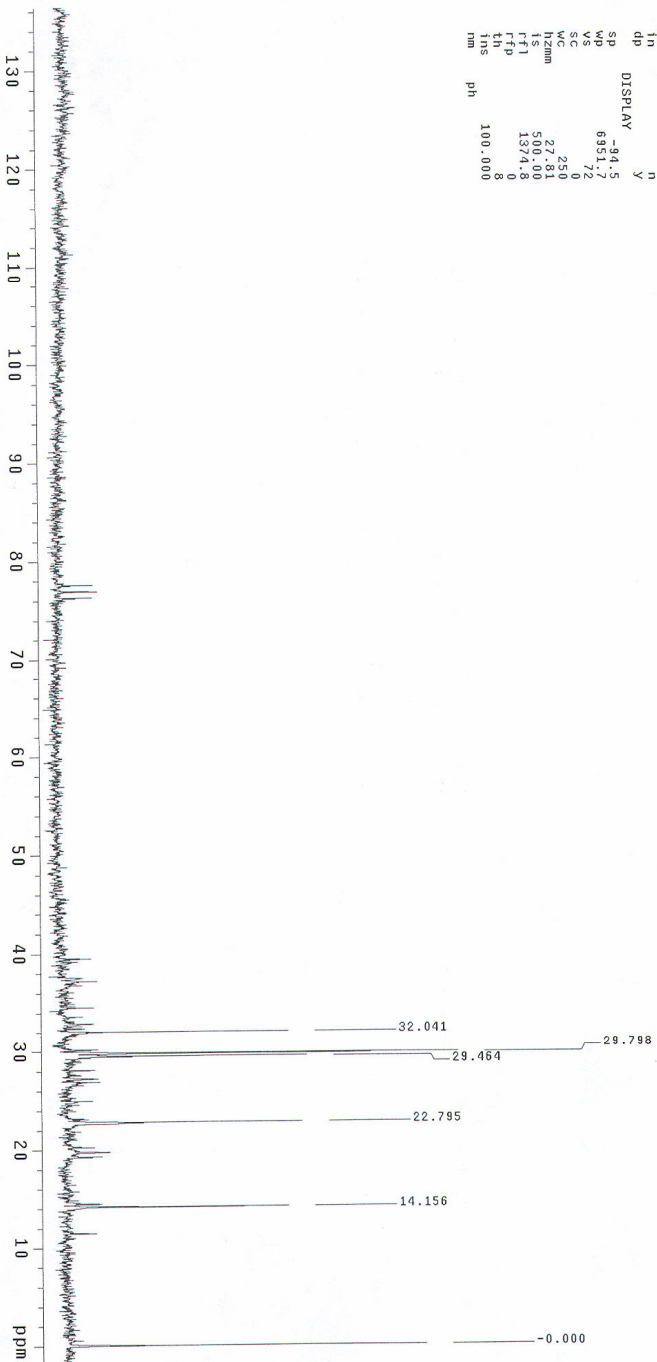


MUESTRA ORIGINAL ISM 13C
exp11 std13c

date May 13 2014
solvent CDCl3
F1 ACQUISITION exp
sfrfq 50.286 dm
in 0 C13 dnm
dt 0 C13 dnm
sw 9988 dm
fb 12484.4 1d
bs 7000 wff1e
tdpr 16 TH
ppm 8.0
d1 1.000 weff
tof 0 wekp
nt 1024 WDS
clock 872 Wnt
gain not used
flags not used

ii n
in n
dp y
sp DISPLAY -94.5
wp 6951.7
vs 72
vc 250
hzmm 27.81
is 500.00
rf1 1374.8
rf2
td 8
ins 100.000
nm ph

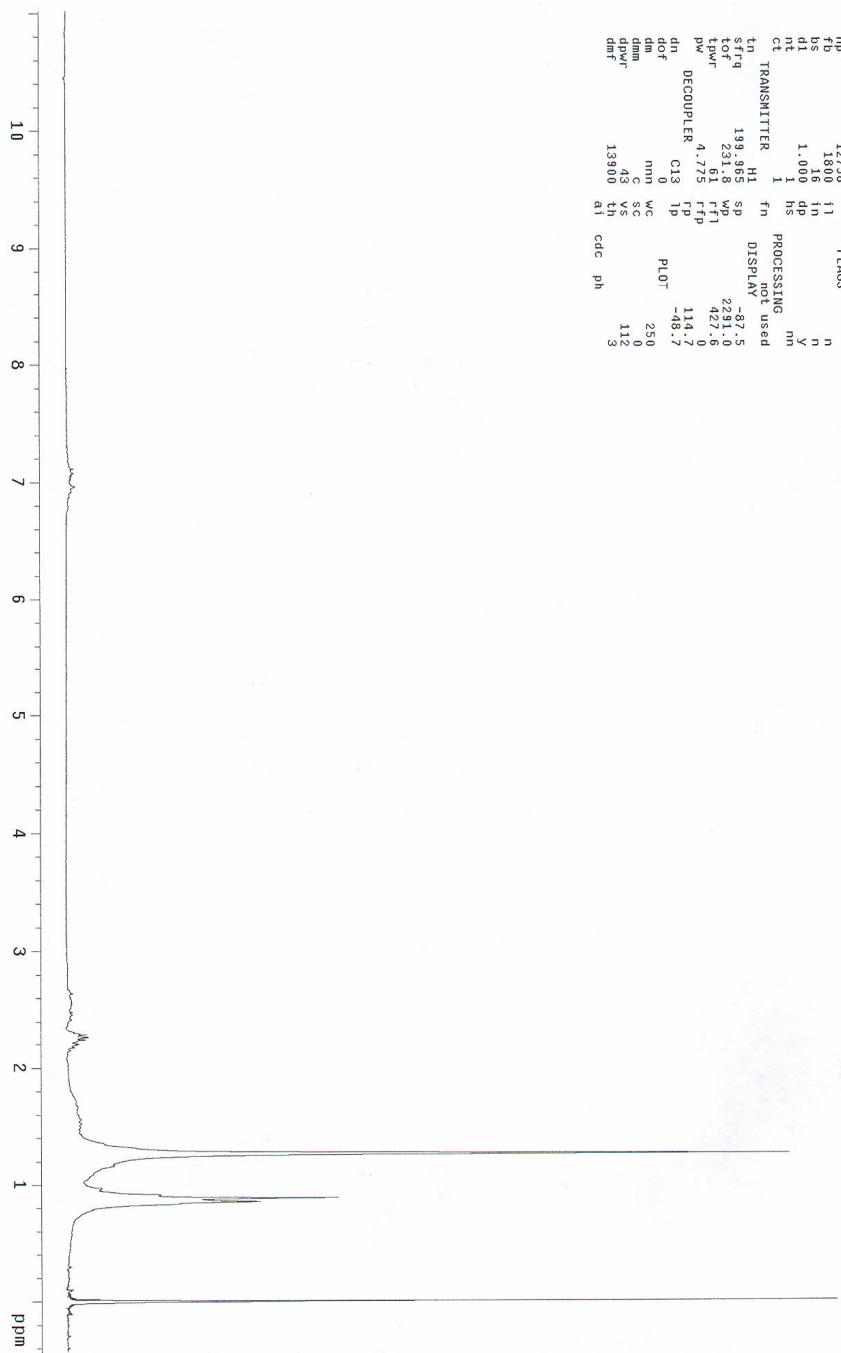
DEC. & VT 199.985
15
0
YYY
12500
1.00
ft
not used





MUESTRA 7 ISA 1H
exp9 s2pul1

PARAMETER	VALUE	UNIT	STATUS
date	May 14 2004	temp	not used
solvent	CDCl3	gain	not used
TI	1	not used	
TI ACQUISITION	exp	not used	
sw	3199.0	pw90	9.550
at	1.394	alfa	20.000
pp	1250	fl	n
rs	1018	in	n
us	1.000	dp	y
d1	1	hs	PROCESSING used
nt	1	fn	DISPLAY used
ct	TRANSMITTER	H1	
tn	199.965	sp	-87.5
strq	231.8	wp	2291.0
tof	4.795	ftd	427.0
bpwr	4.795	fp	114.7
DECOUPLER	C13	lp	-48.7
dn	0	pl0t	250
hof	0	mc	43
dm	mm	sc	112
smm	43	vs	3
downr	13900	th	
dmf		at	cdc ph





MUESTRA 7 ISA AMPLIACION 130

exp11 sid13c

```
SAMPLE DEC. 8 VT
date 14 2004 dfrq 199.965
solvent CDCl3 dn HI
file ACQUISITION exp dpwr 45
sfreq 30.286 dof YV
in C13 dnm W
at 0.400 dmf 12500
np 124920.4 lb PROCESSING 1.00
sw 7016 vfile
ds 60 fn not used
tpwr 8.0
pw 1.00 wgrf
df 1024 wssn
nt 736 wts
ct 736 wnt
atlock not used
gain flags $
il n
in n
dp DISPLAY -144.8
sp 8468.2
vs 40
sc 25.0
hzmm 33.87
ts 500.00
rfi 1376.3
t 20
ins 100.000
nm
ph
```

