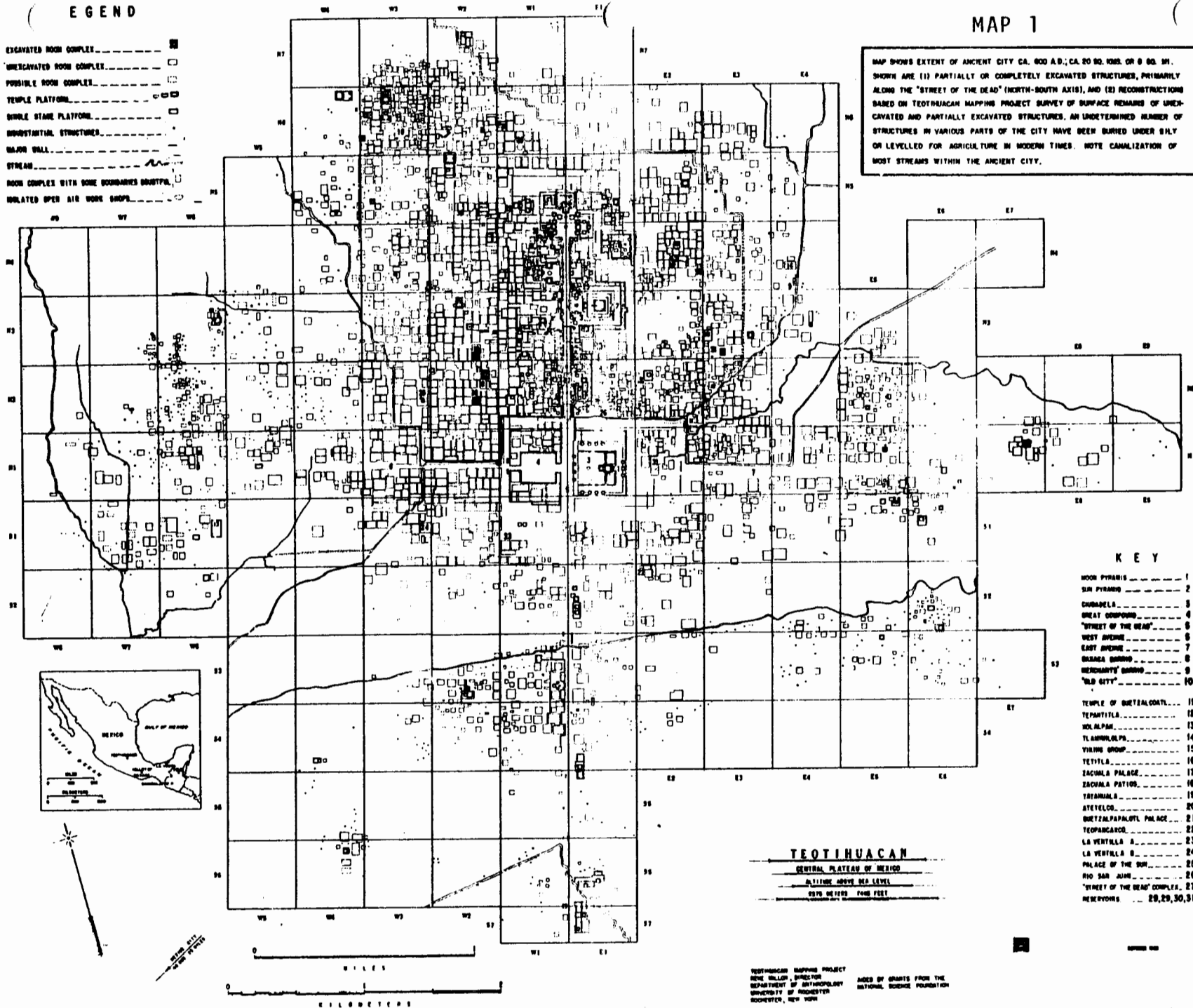


LEGEND

- EXCAVATED ROOM COMPLEX
- UNEXCAVATED ROOM COMPLEX
- POSSIBLE ROOM COMPLEX
- TEMPLE PLATFORM
- SINGLE STAIR PLATFORM
- INDUSTRIAL STRUCTURES
- WALL OR DALL
- STREAM
- ROOM COMPLEX WITH SOME BOUNDARIES DOTTED
- ISOLATED OPEN AIR WORK SHOPS

MAP 1

MAP SHOWS EXTENT OF ANCIENT CITY CA. 800 A.D.; CA. 20 90. 1000. OR 8 90. 91. SHOWN ARE (1) PARTIALLY OR COMPLETELY EXCAVATED STRUCTURES, PRIMARILY ALONG THE "STREET OF THE DEAD" (NORTH-SOUTH AXIS), AND (2) RECONSTRUCTIONS BASED ON TEOTIHUACAN MAPPING PROJECT SURVEY OF SURFACE REMAINS OF UNEXCAVATED AND PARTIALLY EXCAVATED STRUCTURES. AN UNDETERMINED NUMBER OF STRUCTURES IN VARIOUS PARTS OF THE CITY HAVE BEEN BURIED UNDER SILT OR LEVELLED FOR AGRICULTURE IN MODERN TIMES. NOTE CANALIZATION OF MOST STREAMS WITHIN THE ANCIENT CITY.



KEY

- MOON PYRAMIS 1
- SUN PYRAMIS 2
- CARABELA 3
- GREAT COURSE 4
- "STREET OF THE DEAD" 5
- WEST AVENUE 6
- EAST AVENUE 7
- SARASA GROUP 8
- MERCANTILE GROUP 9
- "OLD CITY" 10
- TEMPLE OF QUETZALCOATL 11
- TEPANTLA 12
- XOLALPAN 13
- TLAMBULEPS 14
- VIKING GROUP 15
- TETITLA 16
- SACULA PALACE 17
- SACULA PATIOS 18
- TATAMALA 19
- ATEYELCO 20
- QUETZALPAPALOTL PALACE 21
- TEOPANCARCO 22
- LA VENTILLA A 23
- LA VENTILLA B 24
- PALACE OF THE SUN 25
- RIO SAN JUAN 26
- "STREET OF THE DEAD" COMPLEX 27
- NEW PYRAMIS 28, 29, 30, 31

TEOTIHUACAN

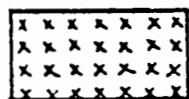
CENTRAL PLATEAU OF MEXICO

ALTITUDE ABOVE SEA LEVEL

2070 METERS FOUR FEET

TEOTIHUACAN MAPPING PROJECT
 RICHIE HULL, DIRECTOR
 DEPARTMENT OF ANTHROPOLOGY
 UNIVERSITY OF ROCHESTER
 ROCHESTER, NEW YORK

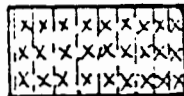
GRADED BY GRANTS FROM THE
 NATIONAL SCIENCE FOUNDATION



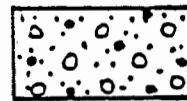
LOOSE LOAM



MEDIUM FINE CRUSHED TEPETATE



HARD-PACKED BROWN EARTH



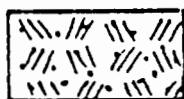
COARSE CRUSHED TEPETATE



MEDIUM-PACKED BROWN EARTH



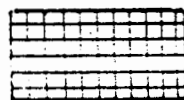
DENSE HARD-PACKED EARTH WITH SMALL STONES



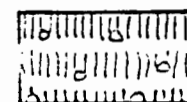
COMPACT EARTH AND SAND



DENSE HARD-PACKED EARTH



EARTH SURFACE



DENSE DARK COMPACT EARTH AND TEPETATE



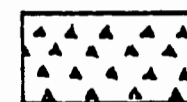
FINE EARTH WITH SMALL STONES



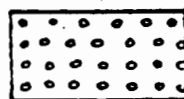
GRAVEL DEPOSITS



CONCRETE FLOOR



OBSIDIAN



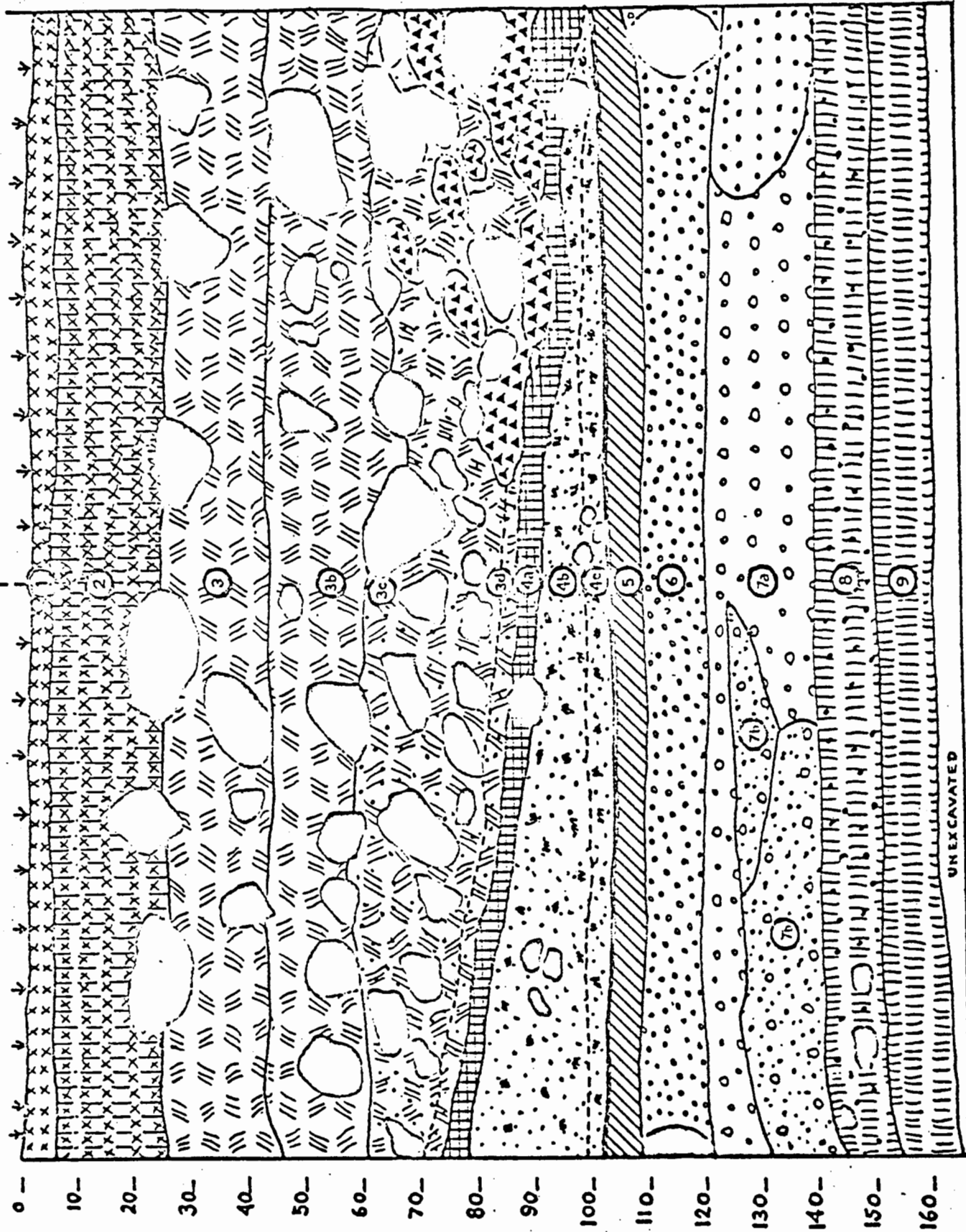
FINE CRUSHED TEPETATE

KEY TO SYMBOLS USED IN EXCAVATION DRAWINGS

W1 S2 WEST PROFILE STRATIGRAPHIC PIT #3

E4

D4



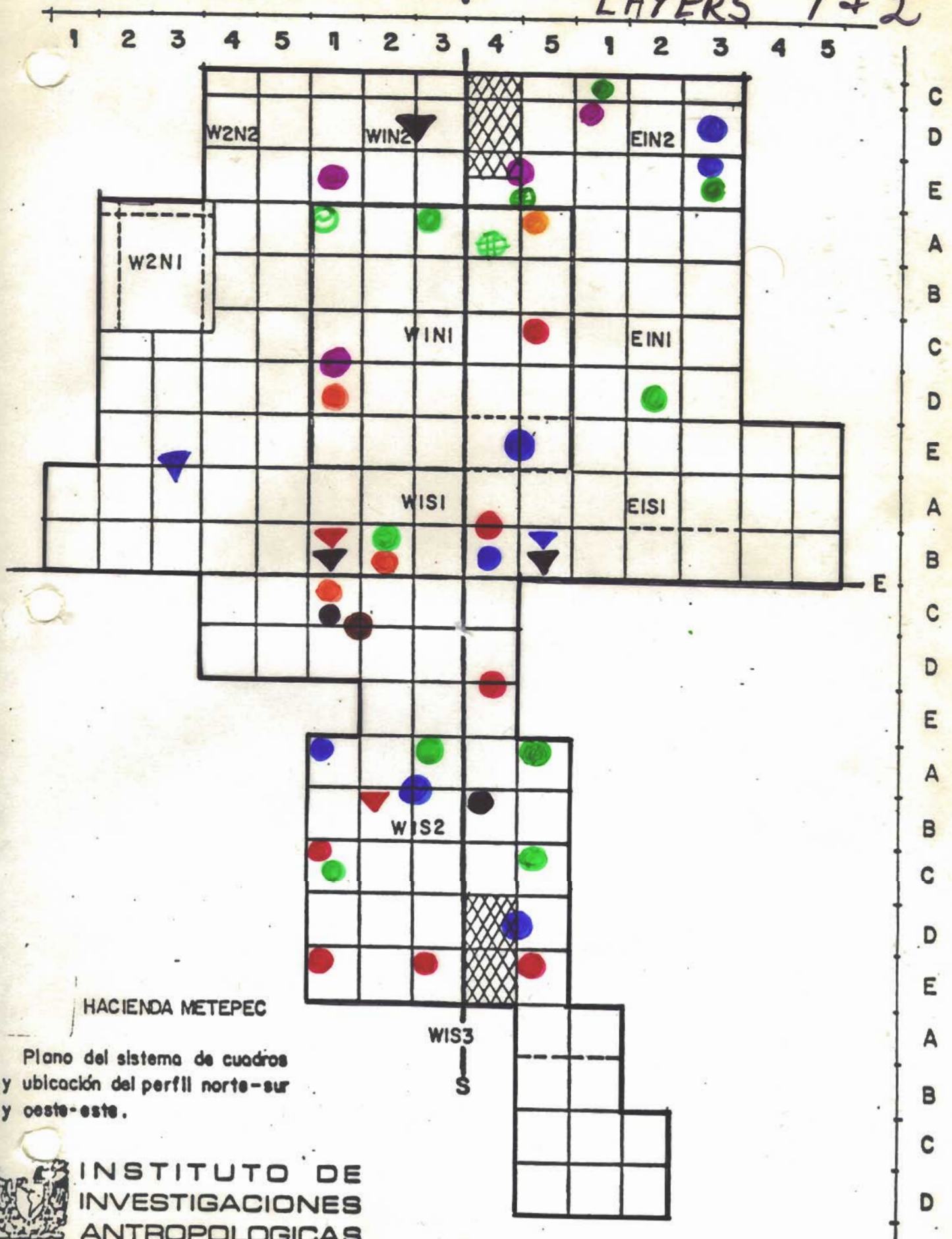
KEY TO SYMBOLS USED IN DISTRIBUTION PLANS

HAND MODELLED HUMAN HEADS
HAND MODELLED TORSOS
HAND MODELLED ANIMAL HEADS
CLASSIC MOULDED HUMAN HEADS
PORTRAIT
PUPPET
WAVY BAND
OTHER
CLASSIC MOULDED TORSOS
CLASSIC MOULDED ANIMAL HEADS
LIMBS
WHISTLES
COYOTLATELCO HEADS
COYOTLATELCO TORSOS
AZTEC HEADS
AZTEC TORSOS



Perfil norte

LAYERS 1+2



HACIENDA METEPEC

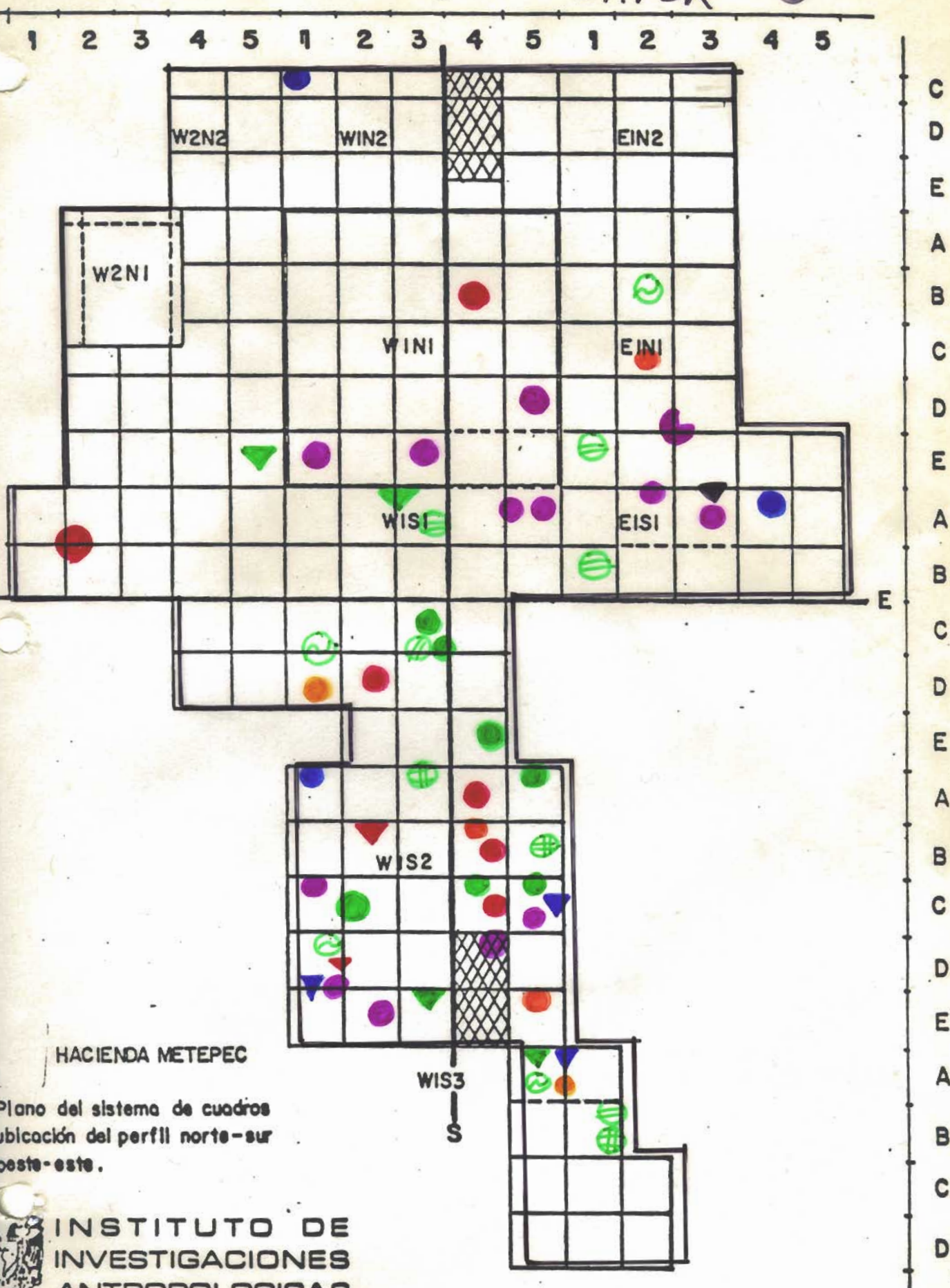
Plano del sistema de cuadros y ubicación del perfil norte-sur y oeste-este.

 INSTITUTO DE INVESTIGACIONES ANTROPOLOGICAS

PLAN OF THE EXCAVATION AT 9:N1E7

Perfil norte

LAYER 3



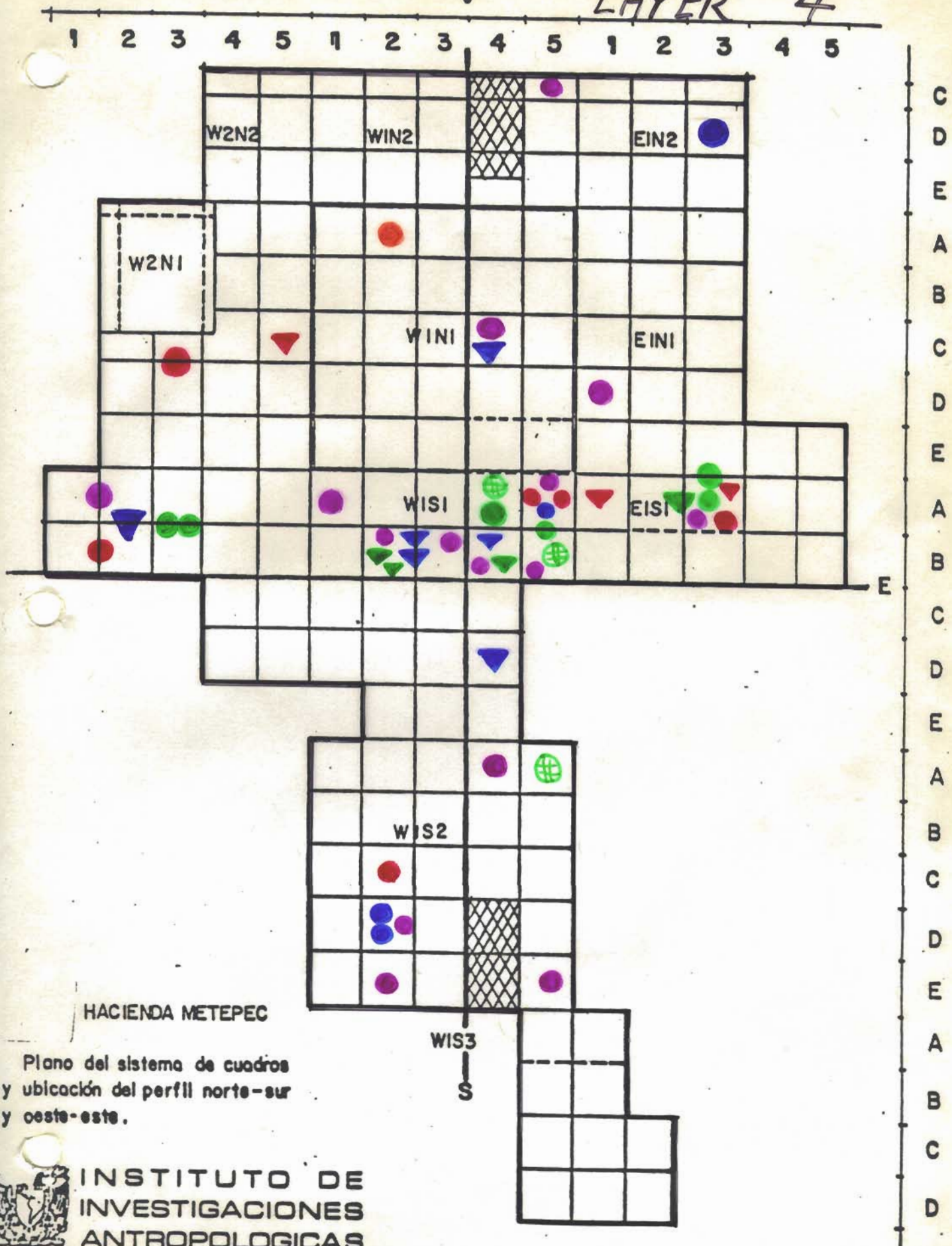
HACIENDA METEPEC

Plano del sistema de cuadros
ubicación del perfil norte-sur
oeste-este.

INSTITUTO DE
INVESTIGACIONES
ANTROPOLOGICAS

Perfil norte

LAYER 4



C
D
E
A
B
C
D
E
A
B
C
D
E
A
B
C
D

HACIENDA METEPEC

Plano del sistema de cuadros
y ubicación del perfil norte-sur
y oeste-este.

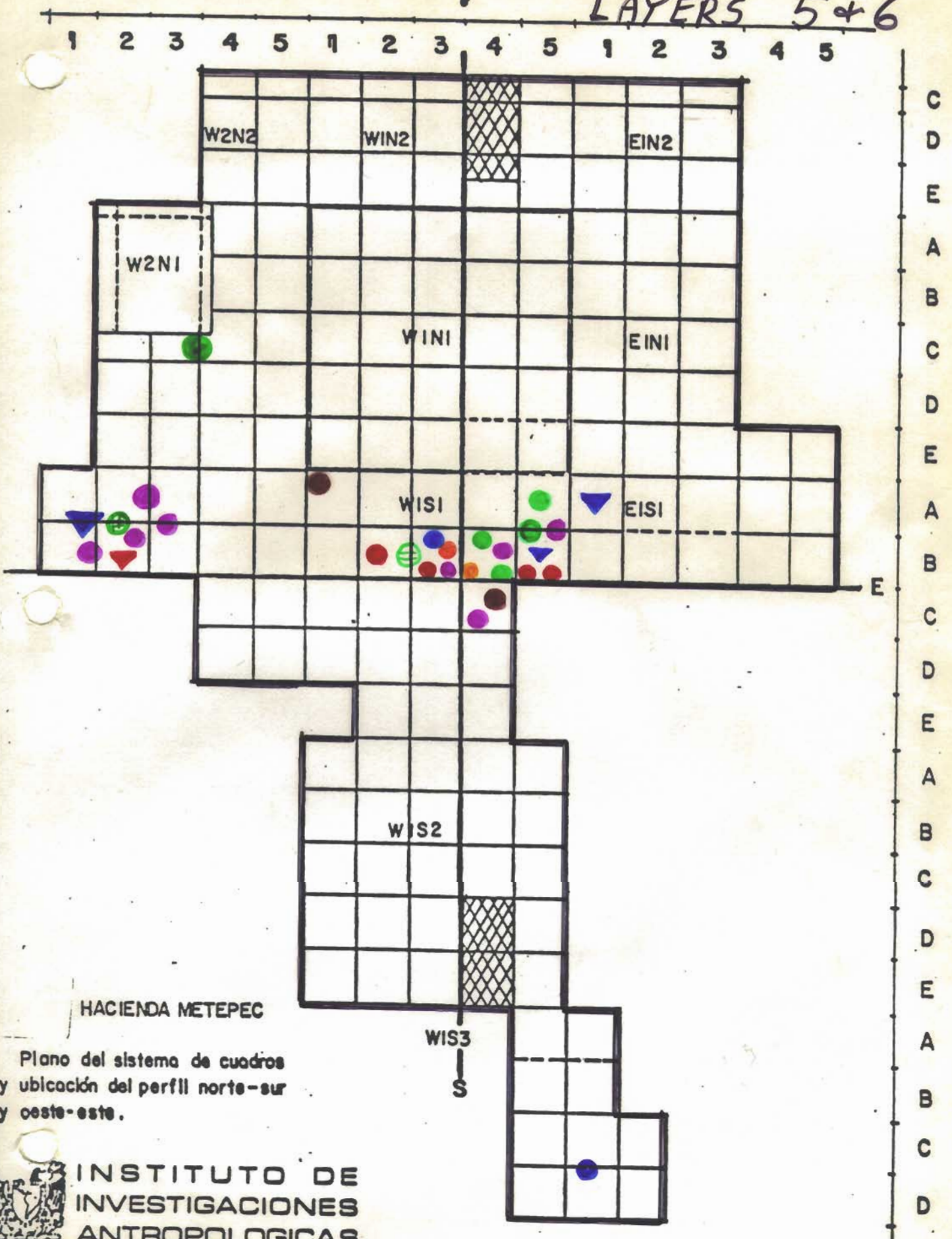


INSTITUTO DE
INVESTIGACIONES
ANTROPOLOGICAS

PLAN OF THE EXCAVATION AT 9:N1E7

Perfil norte

LAYERS 5+6



HACIENDA METEPEC

Plano del sistema de cuadros y ubicación del perfil norte-sur y oeste-este.



INSTITUTO DE INVESTIGACIONES ANTROPOLOGICAS



Plate 1

Looking toward the Northeast from
the unexcavated mound. Site 9:N1E7



Plate 2

The North Complex.
Looking toward the South.



Plate 3

The Southern Courtyard.
Looking toward the North.



Plate 4

The North Complex. Looking toward the Northeast. Walls on the west, north and east. Two columns in front of the steps. A 1x1 sq. meter baulk is left standing inside the east wall.



Plate 5

The Area of the Steps

Looking toward the East. Two steps connect the North Complex with the Southern Courtyard. Unexcavated areas on the steps contain deposits of obsidian debitage.

HAND MODELLED HUMAN HEADS



Fig. 1



Fig. 2

All measurements are shown in centimeters.



Fig. 3



Fig. 4





Fig. 5



Fig. 6





Fig. 7



Fig. 8



Fig. 9



Fig. 10



Fig. 11

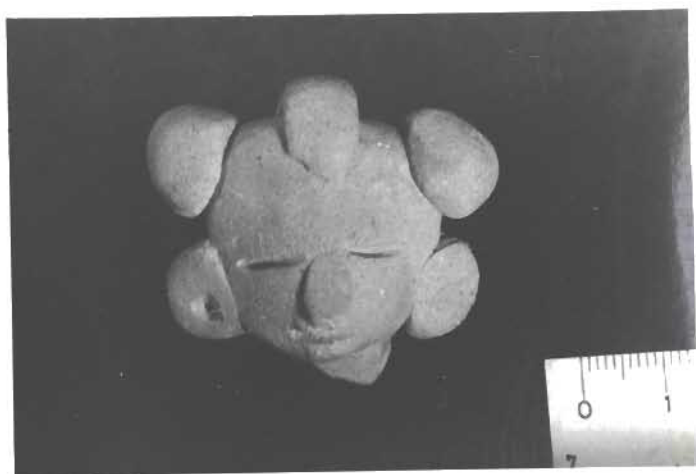


Fig. 12



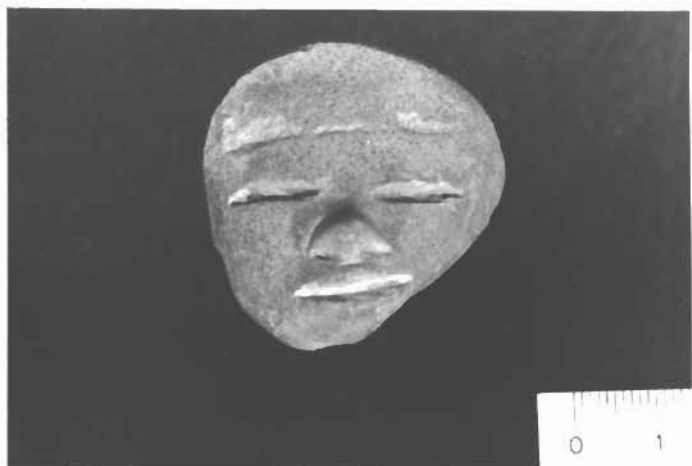


Fig. 13

Fig. 14



Fig. 15



Fig. 16



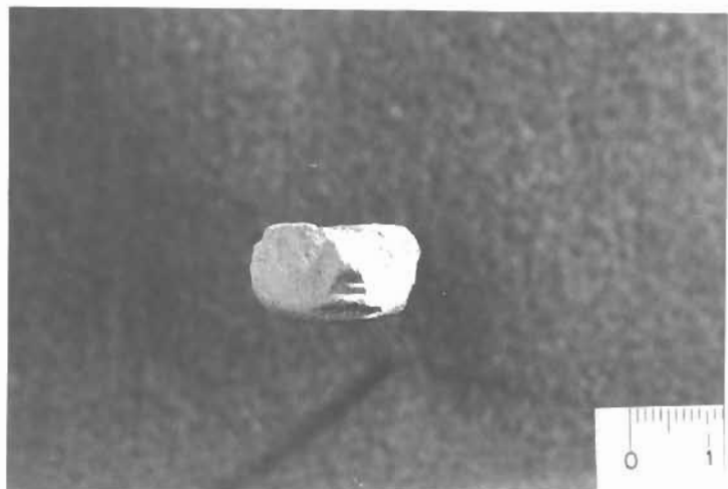


Fig. 17

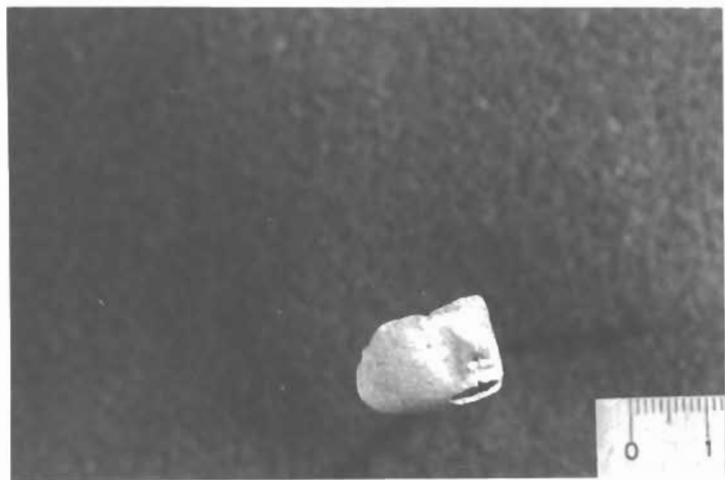


Fig. 18



Fig. 19



Fig. 20



Fig. 22



Fig. 21



Fig. 23

HAND MODELLED ANIMAL HEADS



Fig. 24

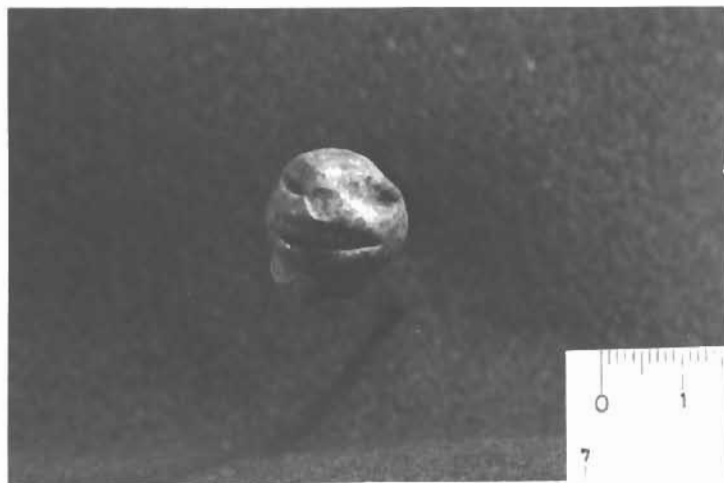


Fig. 25



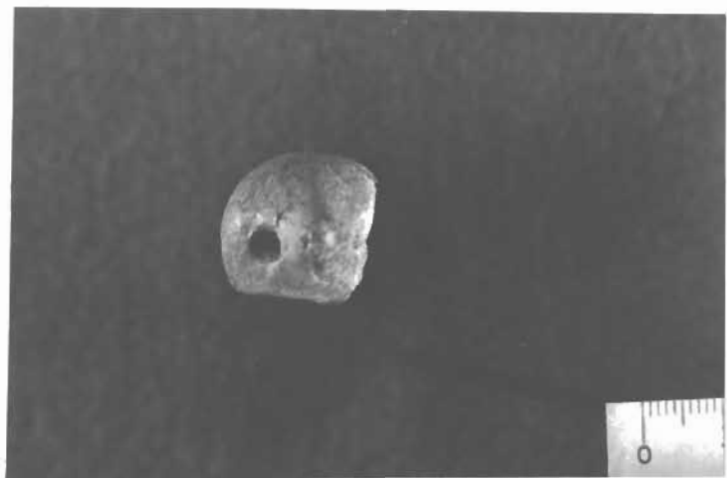
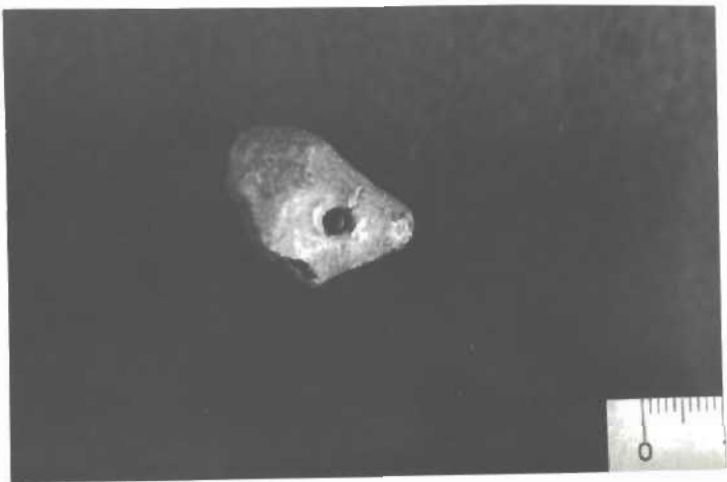


Fig. 26



Fig. 27



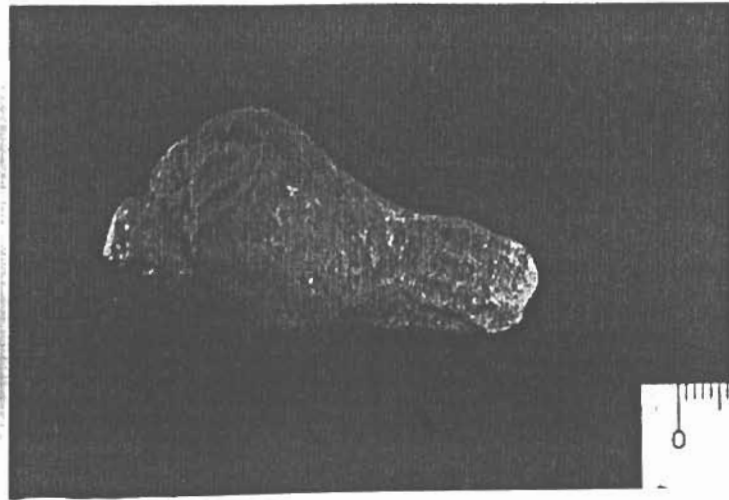


Fig. 28

HAND MODELLED TORSOS

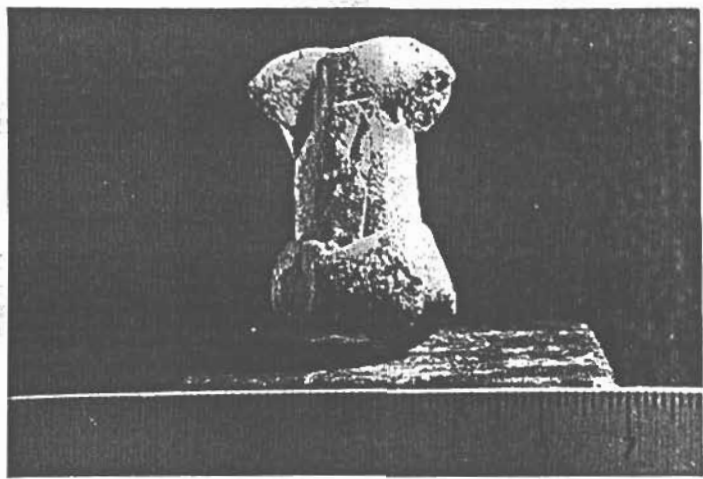


Fig. 29

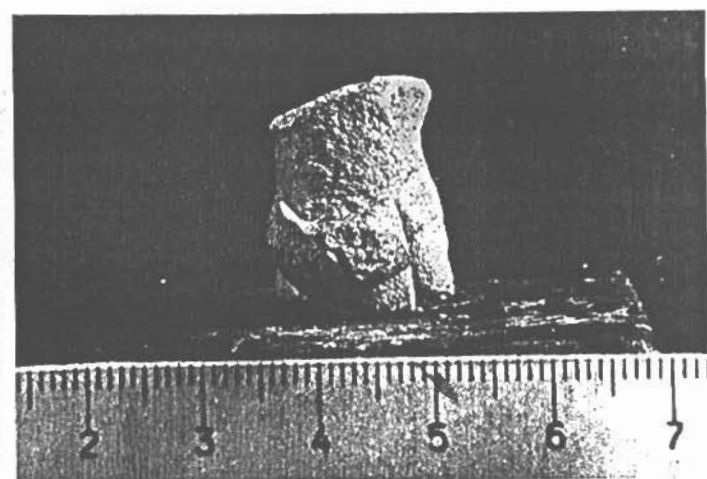


Fig. 30



Fig. 31



Fig. 33



Fig. 32



Fig. 34



Fig. 35



Fig. 37



Fig. 36



Fig. 38



Fig. 39



Fig. 41



Fig. 40



Fig. 42



Fig. 43



Fig. 45



Fig. 44



Fig. 46



Fig. 47



Fig. 48



Fig. 49

CLASSIC MOULDED HUMAN HEADS



Fig. 50



Fig. 51



Fig. 52



Fig. 53





Fig. 54



Fig. 55



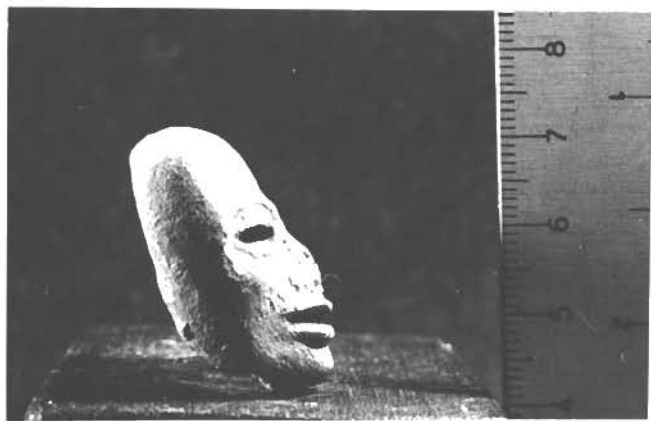


Fig. 56



Fig. 57



Fig. 58



Fig. 59



Fig. 60



Fig. 61



Fig. 62



Fig. 63



Fig. 64



Fig. 65



Fig. 66



Fig. 67



Fig. 68



Fig. 69



Fig. 70



Fig. 71



Fig. 72



Fig. 73





Fig. 74



Fig. 75

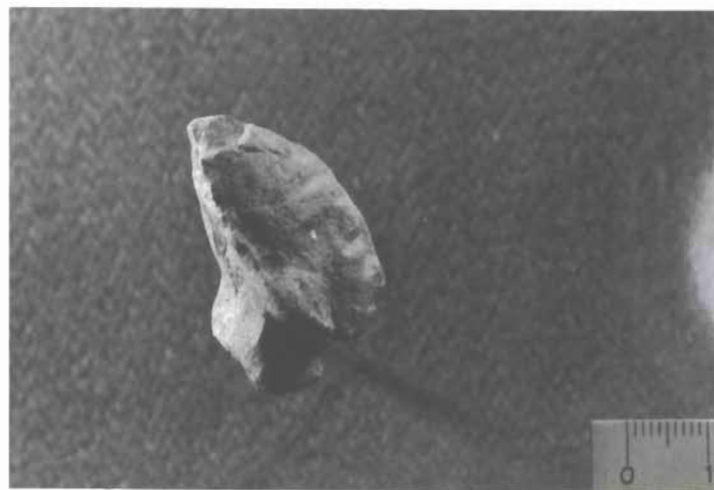




Fig. 76



Fig. 77





Fig. 78



Fig. 79





Fig. 80

Fig. 81



Fig. 82

Fig. 83

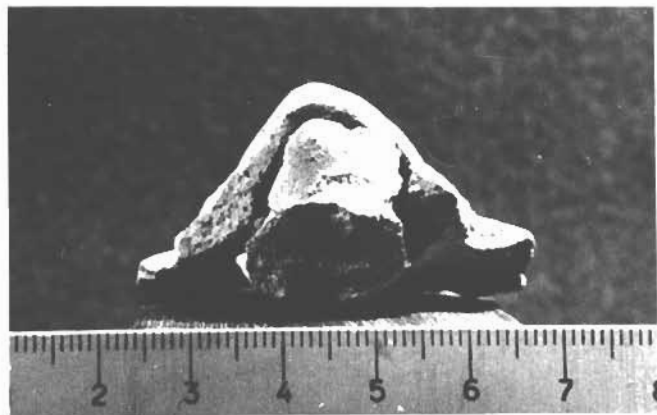


Fig. 84



Fig. 85



Fig. 86



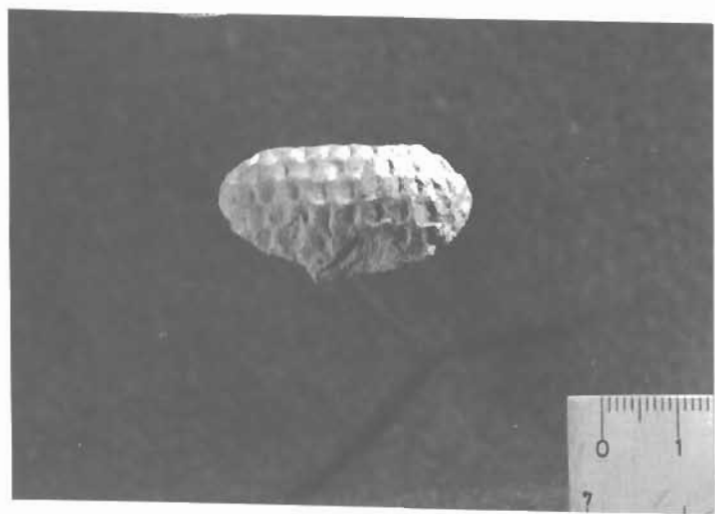


Fig. 87



Fig. 88



Fig. 89



Fig. 90





Fig. 91



Fig. 92

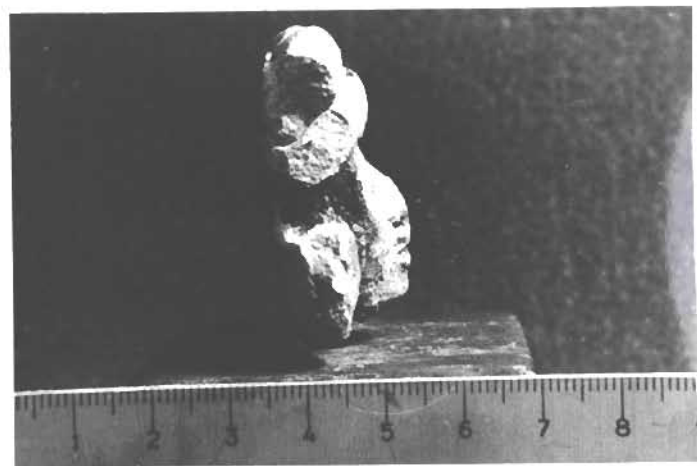
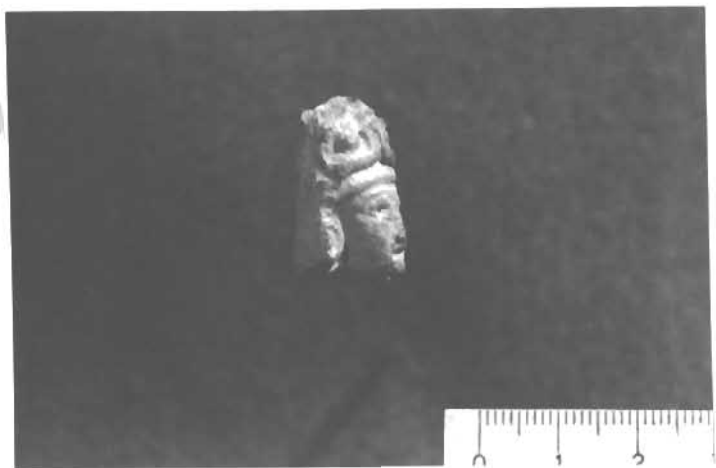




Fig. 93



Fig. 94



Fig. 95



Fig. 96



Fig. 97



Fig. 98



Fig. 99



Fig. 100



Fig. 102



Fig. 101



Fig. 103



Fig. 104



Fig. 106



Fig. 105



Fig. 107

CLASSIC MOULDED ANIMAL HEADS



Fig. 108



Fig. 109



Not an animal -
headless torso
w/ hands on stomach
J.J.



Fig. 110



Fig. 111



Fig. 112





Fig. 113



Fig. 114



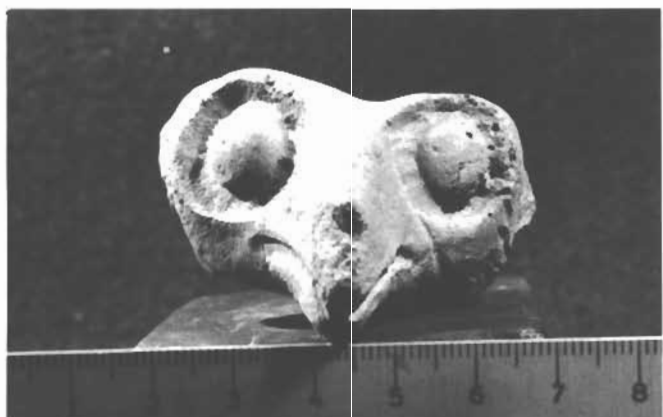


Fig. 115



Fig. 116

CLASSIC MOULDED TORSOS



Fig. 117



Fig. 119



Fig. 118



Fig. 120



Fig. 121



Fig. 123



Fig. 122



Fig. 124



Fig. 125



Fig. 126

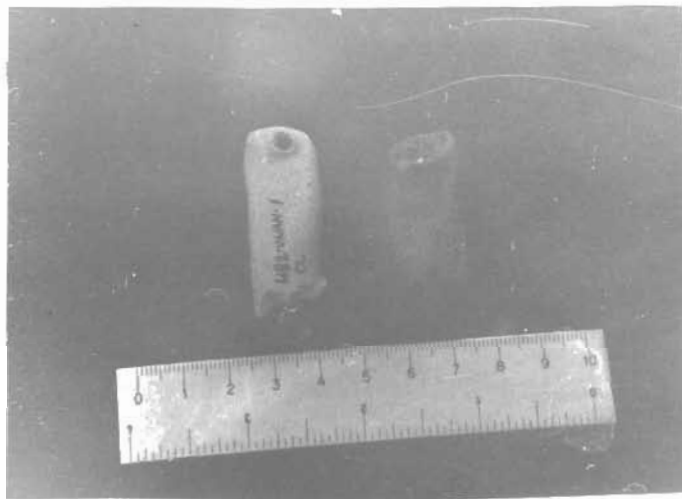


Fig. 127

Upper Photo: Top row a-d
 Middle row e-i
 Bottom row j-n

Lower Photo: o-p



Fig. 128

Top row	a-e
Middle row	f-n
Bottom row	o-s



Fig. 129

Upper Photo: Top row a-i
 Bottom row j-o

Lower Photo: p-s



Fig. 130

Upper Photo: Top row a-f
 Middle row g-k
 Bottom row l-q

Lower Photo: Top row r-t
 Bottom row u-v

WHISTLES

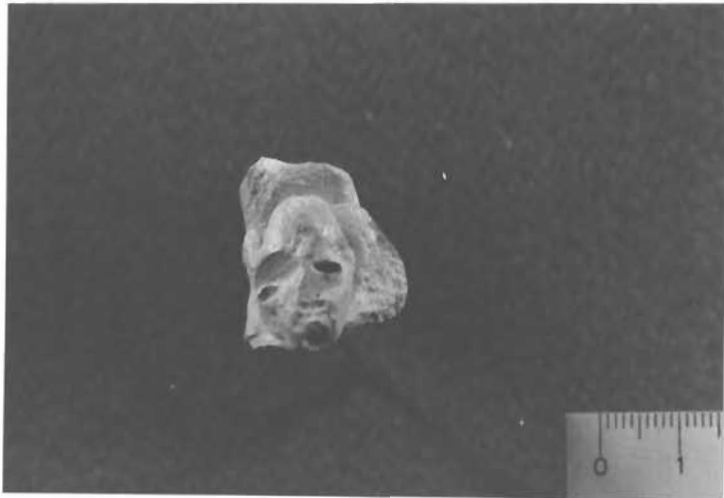


Fig. 131



Fig. 132

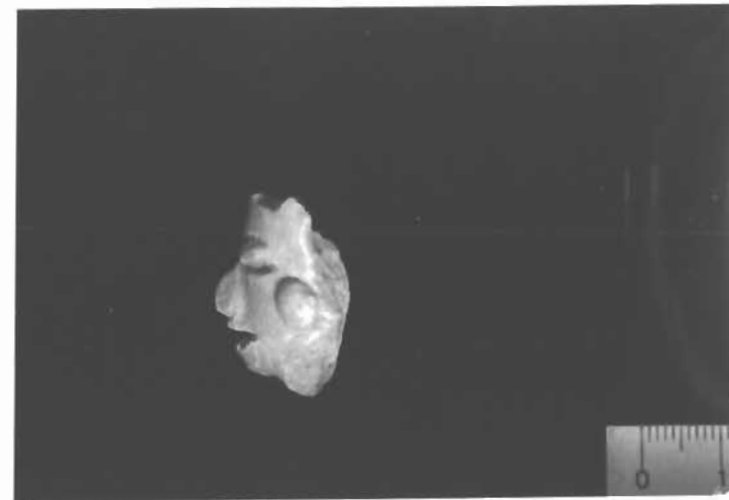




Fig. 133



Fig. 134





Fig. 135

COYOTLATELCO FULL FIGURE AND HEADS



Fig. 136



Fig. 137



Fig. 138





Fig. 139



Fig. 141



Fig. 140

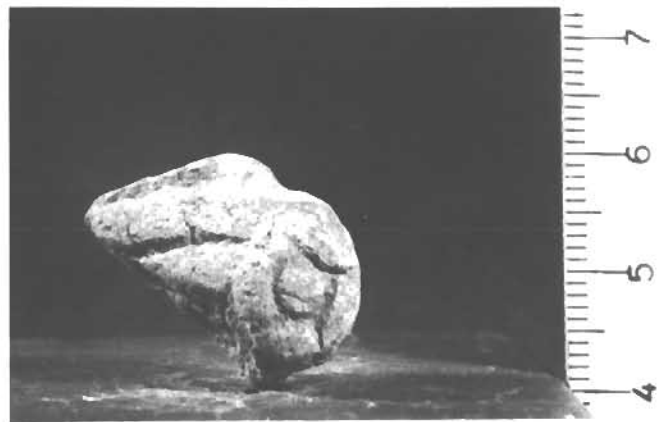


Fig. 142



Fig. 143



Fig. 144



Fig. 145



Fig. 147



Fig. 146



Fig. 148



Fig. 149

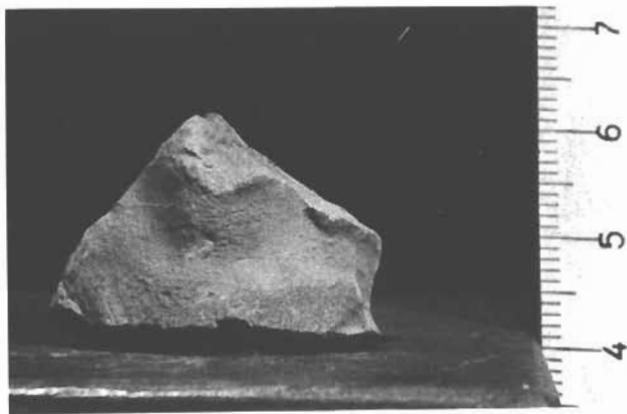


Fig. 150



Fig. 151



Fig. 152



Fig. 153



Fig. 154



Fig. 155





Fig. 156



Fig. 157





Fig. 158



Fig. 159



Fig. 160

COYOTLATELCO TORSOS



Fig. 161



Fig. 163



Fig. 162



Fig. 164



Fig. 165



Fig. 166



Fig. 167



Fig. 168



Fig. 169



Fig. 170

AZTEC HEADS



Fig. 171



Fig. 172

AZTEC TORSOS



Fig. 173



Fig. 175



Fig. 174



Fig. 176