

Annex 1. Ecological Footprint Survey and Results.

Rapp Collins' Footprint Survey.

Approx response time: 2 min.

Your responses will help the Waste-free Committee assess Rapp's ecological and carbon footprint. Submitting this survey grants you the right to enter the raffle of three \$20 gift cards at Free Foods.

Results and winners will be presented during the organic Lunch and Learn on November 8.

1. Do you use paper cups or a washable mug for your coffee/tea?

- a. Paper cup
- b. Washable Mug
- c. I do not drink coffee or tea

2. Approximately how many paper cups do you use every day?

- a. 1
- b. 2
- c. 3
- d. 4
- e. 5+

3. Approximately how many paper towels do you use every time you wash your hands?

- a. 1
- b. 2
- c. 3
- d. 4
- e. 5+
- f. 0

4. Do you make double-sided copies?

- a. Yes
- b. No

5. Do you use our blue paper recycling bins?

- a. Yes
- b. No

6. When you leave work for the day, do you log off or turn off your computer?

- a. Turn off

b. Log off

7. Do you eat organic food?

- a. Yes
- b. No
- c. I don't like it
- d. I don't know what it is

8. How do you commute to work every day? Enter the approximate amount of miles (one way) for every means of transportation you use on your daily commute.

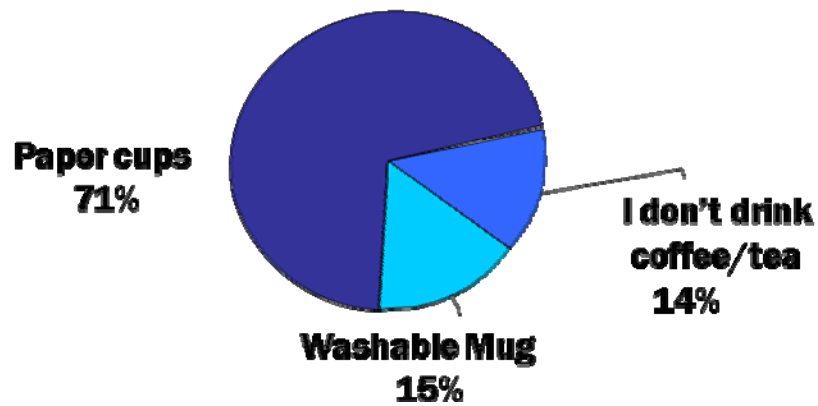
- a. Train ___
- b. Subway ___
- c. Car ___
- d. Ferry ___
- e. Bike ___
- f. Walking ___

Thank you.

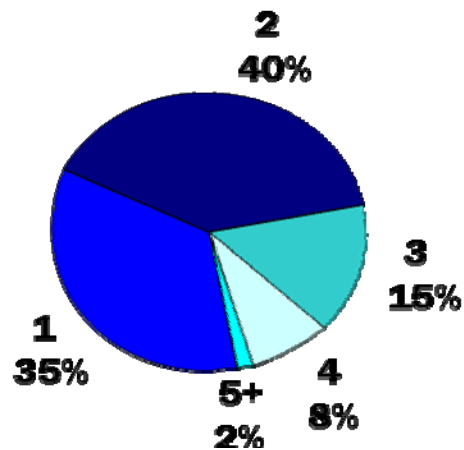
Results

Number of respondents: 80.

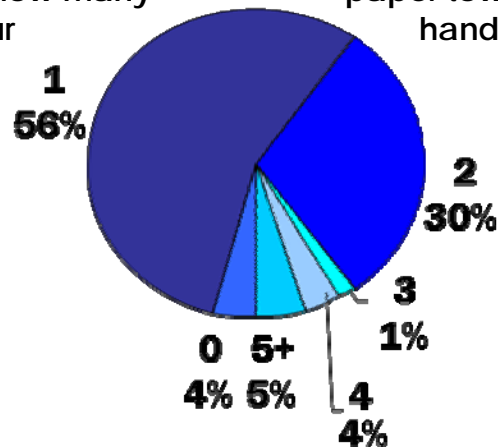
1. Do you use paper cups or a washable mug for your coffee/tea?



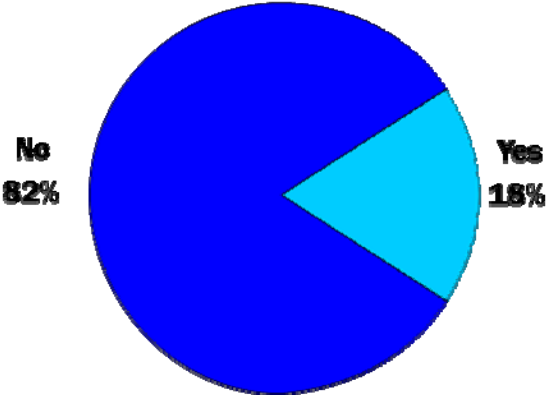
2. Approximately how many paper cups do you use every day?



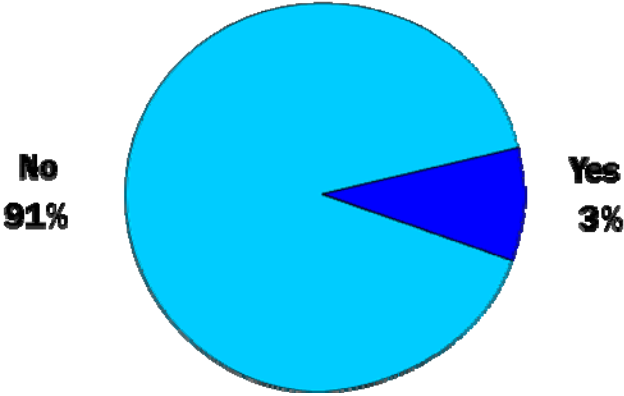
3. Approximately how many paper towels do you use every time you wash your hands?



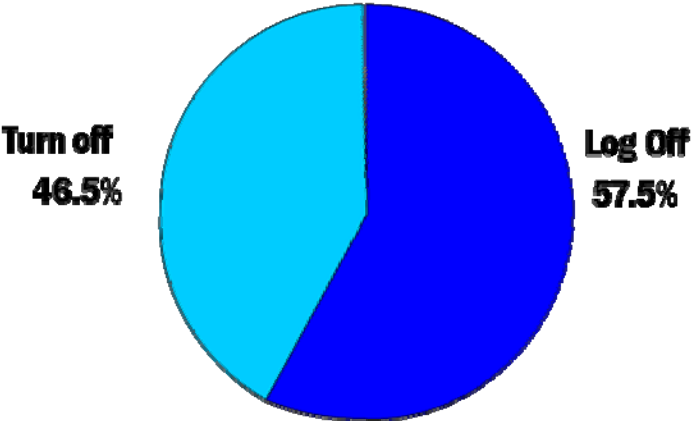
4. Do you make double-sided copies?



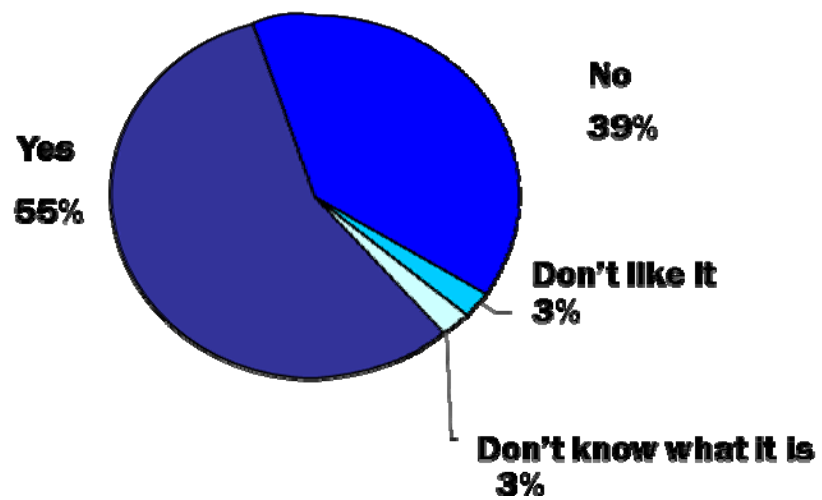
5. Do you use our blue paper recycling bins?



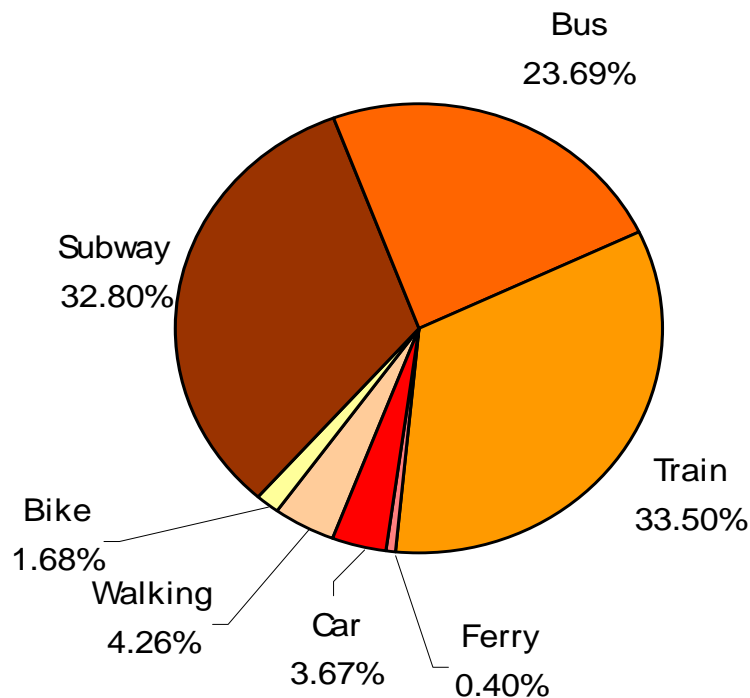
6. When you leave work for the day, do you log off or turn off your computer?



7. Do you eat organic food?



8. How do you commute to work every day? Enter the approximate amount of miles (one way) for every means of transportation you use on your daily commute.*



*Results show percentages of the total amount of miles traveled by employees.