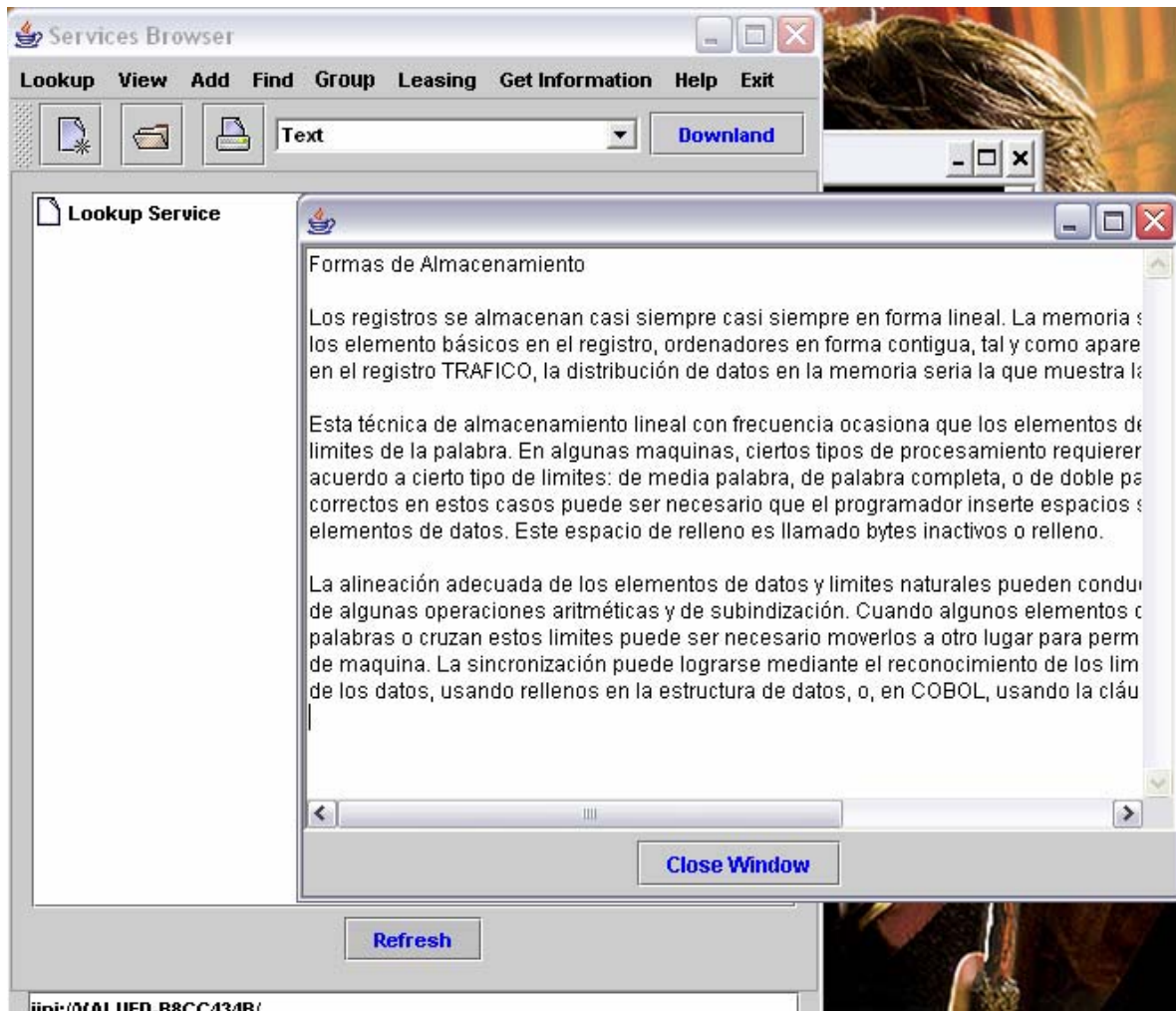
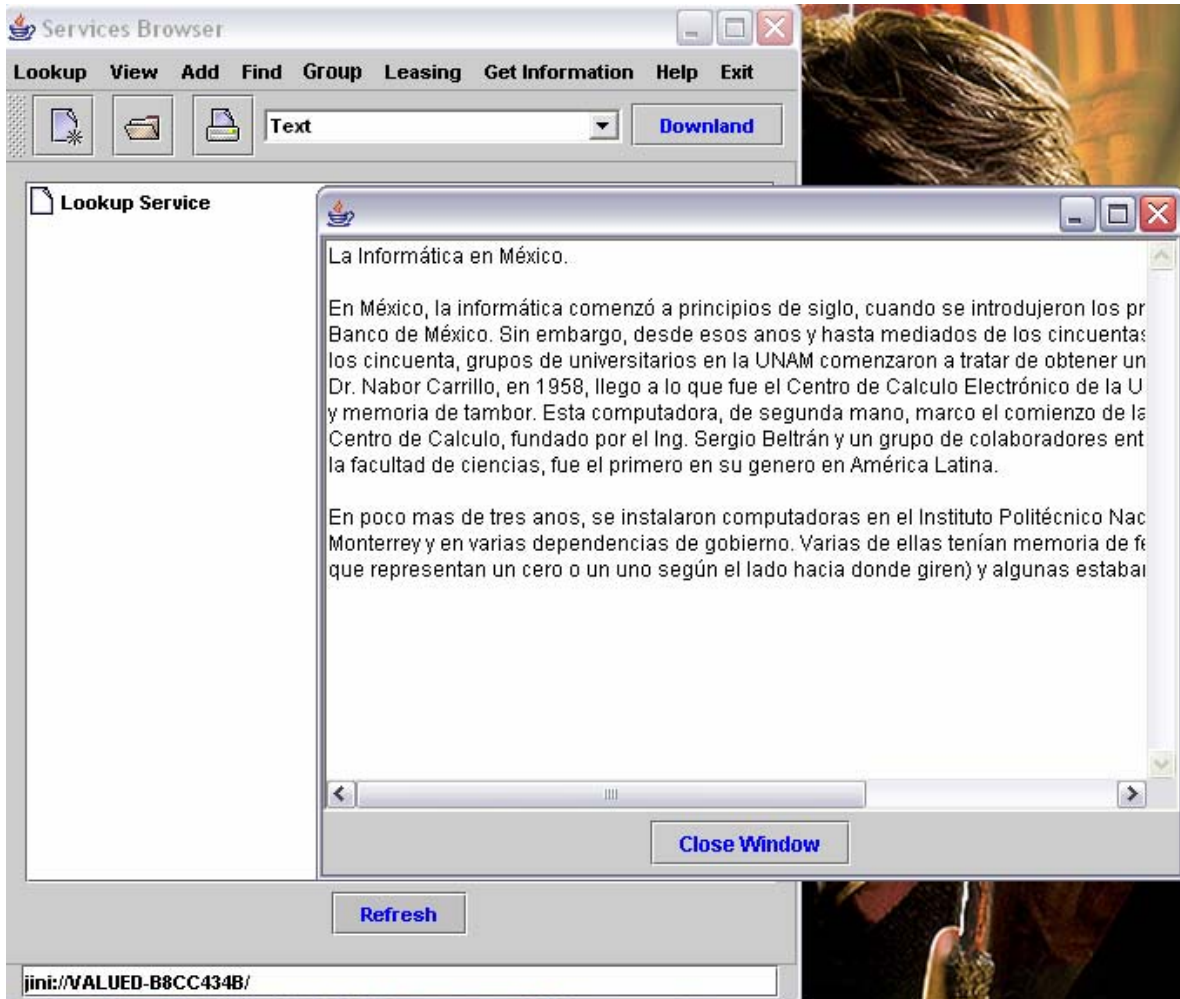


Apéndice A. Anexo de Pruebas.

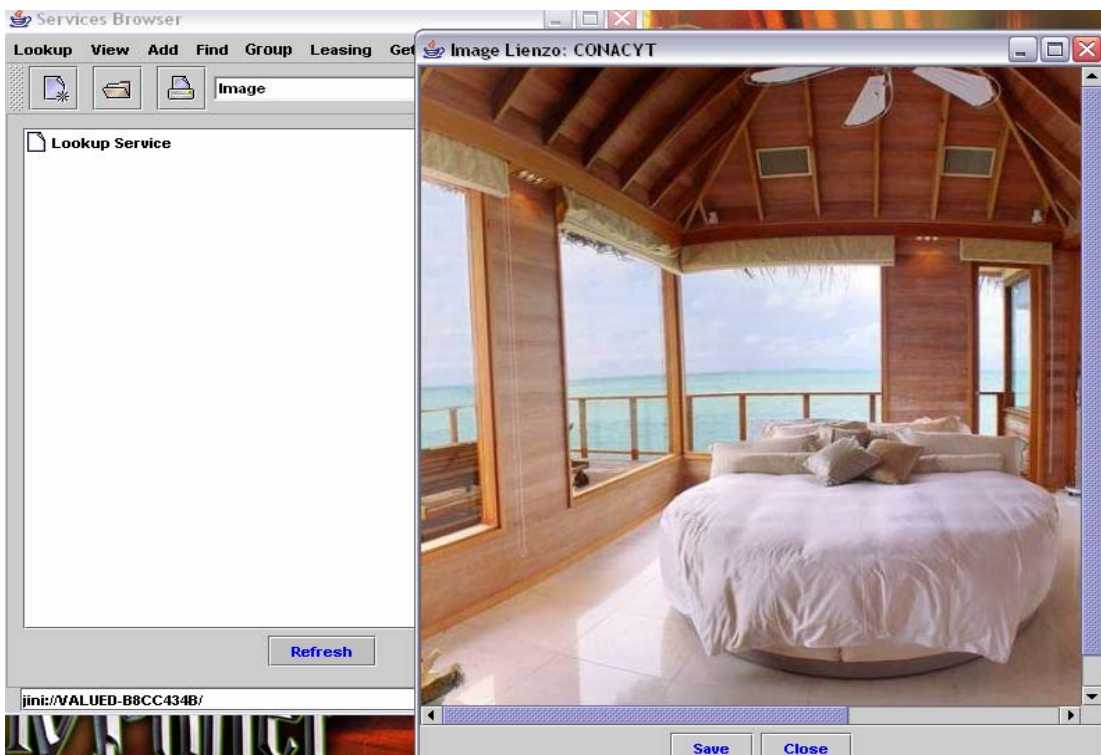
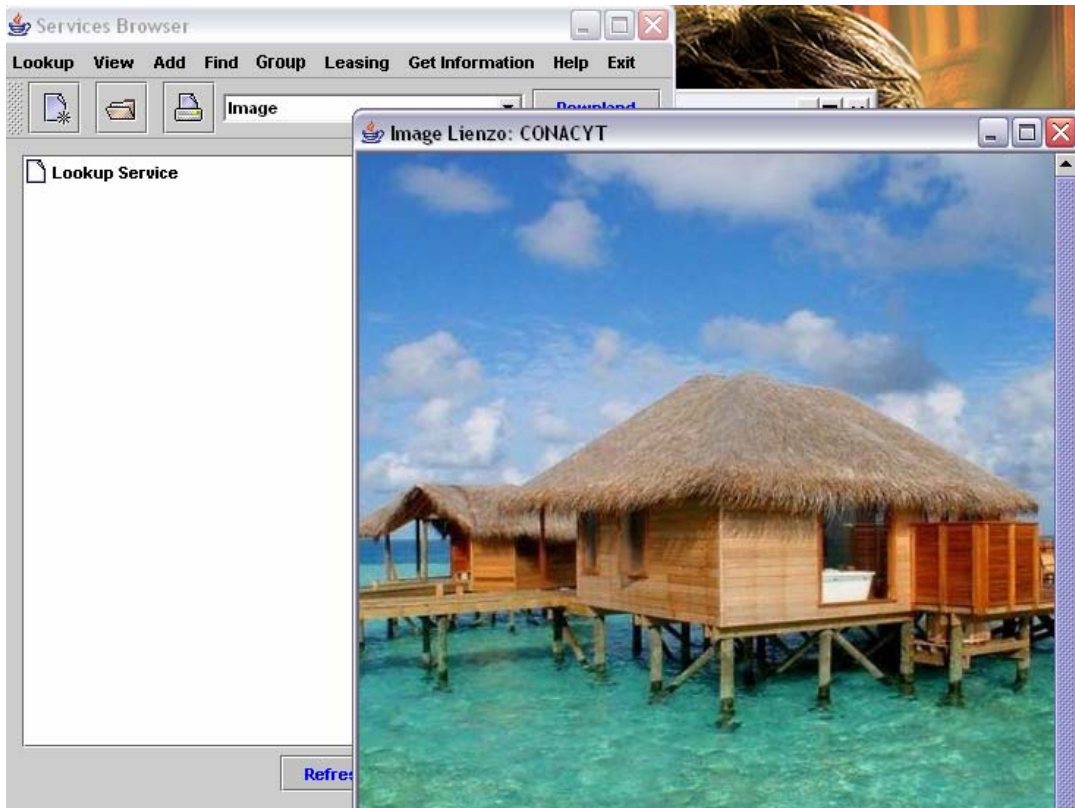
1. Adquisición de texto de Servicios Remotos Tema: Formas de Almacenamiento



2. Adquisición de texto de Servicios Remotos Tema: La Informática en México



3. Adquisición de Imágenes en Servicios Remotos



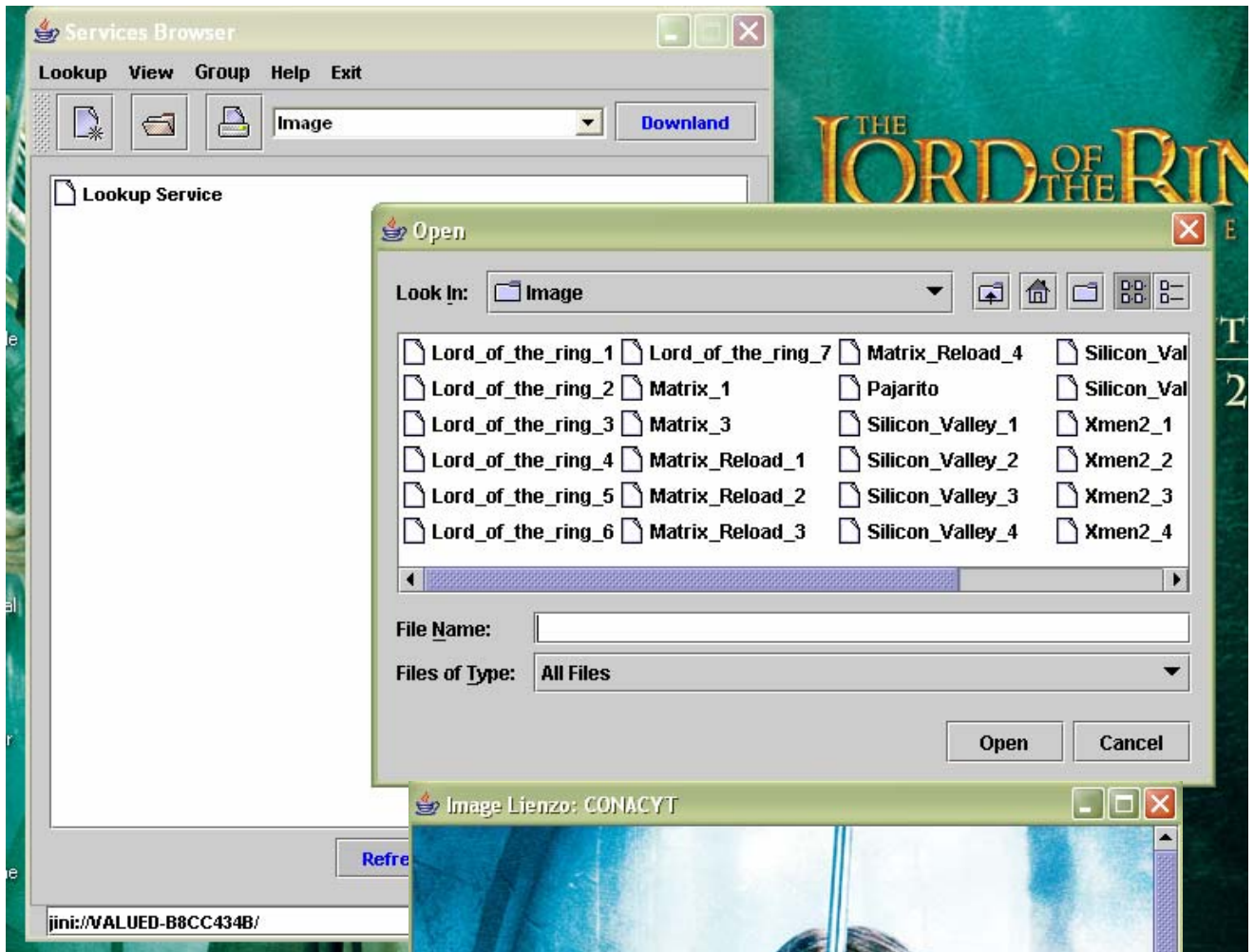
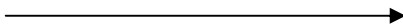


Imagen Descargada



4. Aplicación de Operadores Suma de Imágenes

The image displays the 'ImageTransformer' application interface. The main window is titled 'Browser: ImageTransformer' and contains two image preview panes. The left pane shows two source images: a close-up of a metallic, blue-toned face and a close-up of a yellow eye. The right pane shows a scene with three people in a stone archway. Below the panes are 'Cargar' (Load) and 'Borrar' (Delete) buttons. A central control area features a dropdown menu set to 'Suma de Imagenes' (Image Summation) and an 'Aplica' (Apply) button. On the left side, there are input fields for 'Intervalo' (Interval) and 'Umbral' (Threshold). A separate window titled 'Image Transformer' shows the 'Imagen Procesada' (Processed Image), which is a composite of the source images with a glowing effect.

Imagen Procesada →

5. Resultado en la aplicación de otros Operadores

