

A-4 TUBERIA SANITARIA DE ACERO INOXIDABLE



SANITARY STAINLESS STEEL TUBING
for Dairy, Food, Beverage & Other Sanitary Processes

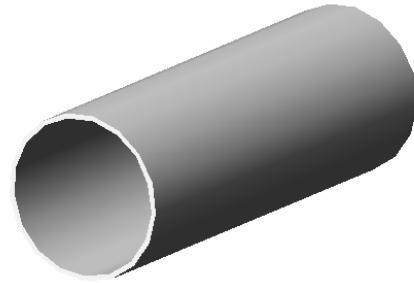
RATH MANUFACTURING COMPANY

Rath sanitary process tubing meets ASTM A270 and 3A finish specifications. It is manufactured from the finest quality stainless steel materials made exclusively to Rath melt criteria. The tubing is formed with an exclusive Micro-Weld process on tube mills developed and built by Rath to assure weld seam integrity and consistent finish. Select tubing in sizes from 1" to 4" O.D. in stock 20 ft. lengths. Custom lengths are also available



Specification

Tubing shall be Rath 304L sanitary stainless steel tubing produced to dimensional tolerances and finish requirements of ASTM A270/A450 and 3A.



Tubing Sizes And Tolerances

(all dimensions in inches)

Size (O.D.)	Gauge	Outside Diameter		Length		Wall	
		Spec	Rath Typical	Spec	Spec	Rath Typical	
1"	16 (.065")	-.008/+0.002	-.006/+0.004	-0 +1/8	+/- 12.5%	+/-3.0%	
1-1/2"	16 (.065")	-.008/+0.002	-.006/+0.002	-0 +1/8	+/- 12.5%	+/-3.0%	
2"	16 (.065")	-.011/+0.002	-.008/+0.002	-0 +1/8	+/- 12.5%	+/-3.0%	
2-1/2"	16 (.065")	-.011/+0.002	-.008/+0.002	-0 +1/8	+/- 12.5%	+/-3.0%	
3"	16 (.065")	-.012/+0.003	-.010/+0.002	-0 +1/8	+/- 12.5%	+/-3.0%	
4"	14 (.083")	-.015/+0.003	-.015/+0.003	-0 +1/8	+/- 12.5%	+/-3.0%	