

**CALCULO DE RASANTES:
PROYECTO EJECUTIVO PARA LA PAVIMENTACION DEL CAMINO
SAN PEDRO EL ALTO - SAN PEDRO DE LOS BAÑOS
EJE PRINCIPAL**

EST.	ELEV. TERRENO NATURAL	OBS.	TANG. VERTICAL		CORRECCION CURVA VERTICAL		ELEV. RASANTE	E S P E S O R E S		BOMBEO EN %		ELEV. HOMBRO IZQ.		ELEV. HOMBRO DER.	
			PENDIENTE	COTAS	ELEV. TAN	C		CORTE	TERR.	IZQ	DER	PAV.	DIST.	PAV.	DIST
0+000	2568.684	P.S.T.V	-0.01940	2568.694			2568.694	0.010	-0.40	0.15	2568.634	15.000	2568.716	15.000	
0+002.95	2568.637			2568.637			2568.637	0.000	-0.49	-0.59	2568.563	15.000	2568.549	15.000	
0+010		P.C.V		2568.500	2568.500	0.000	2568.500		-1.28	0.08	2568.429	5.550	2568.507	8.370	
0+018.535	2566.446			2568.334	2568.334	-0.134	2568.201		1.25	-2.00	2568.257	4.500	2568.104	4.850	
0+020	2566.261	P.I.V	-0.09277	2568.306	2568.306	-0.183	2568.123	1.862	1.62	-2.00	2568.195	4.500	2568.024	4.950	
0+030		P.T.V		2567.378	2568.112	-0.734	2567.378		2.50	-2.50	2567.491	4.500	2567.248	5.200	
0+040	2564.861			2566.451			2566.451	1.590	1.62	-2.00	2566.524	4.500	2566.352	4.950	
0+041.482	2564.739			2566.313			2566.313	1.574	1.25	-1.25	2566.369	4.500	2566.253	4.850	
0+057.359	2563.728			2564.840			2564.840	1.112	-2.00	2.00	2564.743	4.850	2564.930	4.500	
0+060	2563.578	P.C.V		2564.595	2564.595	0.000	2564.595	1.017	-2.00	2.00	2564.495	5.030	2564.685	4.500	
0+070				2563.668	2563.668	0.063	2563.731		-2.50	2.50	2563.601	5.200	2563.843	4.500	
0+080	2562.341	P.I.V	-0.04233	2562.740	2562.740	0.252	2562.992	0.651	-2.00	1.98	2562.891	5.050	2563.081	4.500	
0+082.906	2562.174			2562.617	2562.470	0.331	2562.801	0.627	-2.00	1.25	2562.704	4.850	2562.857	4.500	
0+090				2562.317	2561.812	0.567	2562.380		-2.00	-1.48	2562.290	4.500	2562.313	4.500	
0+100	2561.451	P.T.V		2561.893	2560.885	1.009	2561.893	0.442	-2.00	-2.00	2561.803	4.500	2561.803	4.500	
0+110				2561.470			2561.470		-2.00	-2.00	2561.380	4.500	2561.380	4.500	
0+120	2560.717	P.C.V		2561.047	2561.047	0.000	2561.047	0.330	-2.00	-2.00	2560.957	4.500	2560.957	4.500	
0+130				2560.623	2560.623	-0.030	2560.593		-1.94	-2.00	2560.506	4.500	2560.503	4.500	
0+140	2559.762	P.I.V	-0.06667	2560.200	2560.200	-0.122	2560.078	0.316	1.40	-2.00	2560.141	4.500	2559.982	4.810	
0+143.813	2559.596			2559.946	2560.039	-0.172	2559.866	0.270	2.60	-2.60	2559.983	4.500	2559.734	5.100	
0+150				2559.533	2559.777	-0.274	2559.503		4.46	-4.46	2559.704	4.500	2559.255	5.560	
0+160	2558.579	P.T.V		2558.867	2559.353	-0.487	2558.867	0.288	5.00	-5.00	2559.092	4.500	2558.582	5.700	
0+170.634	2557.946			2558.158			2558.158	0.212	2.60	-2.60	2558.275	4.500	2558.025	5.100	
0+180	2557.047	P.C.V		2557.533	2557.533	0.000	2557.533	0.486	-0.46	-2.00	2557.513	4.500	2557.443	4.500	
0+190				2556.867	2556.867	0.039	2556.906		-2.00	-2.00	2556.816	4.500	2556.816	4.500	
0+200	2556.011	P.I.V	-0.03550	2556.200	2556.200	0.156	2556.356	0.345	-2.00	-2.00	2556.266	4.500	2556.266	4.500	
0+210				2555.845	2555.533	0.351	2555.884		-2.00	-2.00	2555.794	4.500	2555.794	4.500	
0+220	2555.068	P.T.V		2555.490	2554.867	0.623	2555.490	0.422	-2.00	-0.45	2555.400	4.500	2555.470	4.500	
0+232.846	2554.687			2555.034			2555.034	0.347	-3.78	3.78	2554.834	5.300	2555.204	4.500	
0+240	2554.523			2554.780			2554.780	0.257	-6.09	6.09	2554.427	5.800	2555.054	4.500	
0+250				2554.425			2554.425		-6.39	6.39	2554.051	5.860	2554.713	4.500	
0+260	2553.818			2554.070			2554.070	0.252	-3.05	3.05	2553.913	5.150	2554.207	4.500	
0+264.02	2553.582			2553.927			2553.927	0.345	-1.71	1.71	2553.844	4.870	2554.004	4.500	
0+274.291	2553.012			2553.563			2553.563	0.551	2.02	-2.02	2553.654	4.500	2553.462	4.980	
0+280	2552.808	P.C.V		2553.360	2553.360	0.000	2553.360	0.552	4.26	-4.26	2553.552	4.500	2553.125	5.520	
0+289.454	2552.523			2553.024	2553.024	0.016	2553.040	0.517	2.63	-2.63	2553.159	4.500	2552.906	5.120	
0+300	2552.251	P.I.V	-0.02125	2552.650	2552.650	0.071	2552.721	0.470	-0.85	-2.00	2552.683	4.500	2552.631	4.500	
0+310				2552.438	2552.295	0.160	2552.455		-2.00	-2.00	2552.365	4.500	2552.365	4.500	
0+320	2551.822	P.T.V		2552.225	2551.940	0.285	2552.225	0.403	-2.00	-2.00	2552.135	4.500	2552.135	4.500	
0+330				2552.013			2552.013		-2.00	-2.00	2551.923	4.500	2551.923	4.500	
0+340	2551.464			2551.800			2551.800	0.336	-2.00	-2.00	2551.710	4.500	2551.710	4.500	
0+350				2551.588			2551.588		-2.00	-2.00	2551.498	4.500	2551.498	4.500	
0+360	2550.959			2551.375			2551.375	0.416	-2.00	-2.00	2551.285	4.500	2551.285	4.500	
0+370				2551.163			2551.163		-2.00	-2.00	2551.073	4.500	2551.073	4.500	
0+380	2550.486			2550.950			2550.950	0.464	-2.00	-2.00	2550.860	4.500	2550.860	4.500	
0+390				2550.738			2550.738		-2.00	-2.00	2550.648	4.500	2550.648	4.500	

**CALCULO DE RASANTES:
PROYECTO EJECUTIVO PARA LA PAVIMENTACION DEL CAMINO
SAN PEDRO EL ALTO - SAN PEDRO DE LOS BAÑOS
EJE PRINCIPAL**

EST.	ELEV. TERRENO NATURAL	OBS.	TANG. VERTICAL		CORRECCION CURVA VERTICAL		ELEV. RASANTE	E S P E S O R E S		BOMBEO EN %		ELEV. HOMBRO IZQ.		ELEV. HOMBRO DER.	
			PENDIENTE	COTAS	ELEV. TAN	C		CORTE	TERR.	IZQ	DER	PAV.	DIST.	PAV.	DIST
0+400	2550.115	P.C.V		2550.525	2550.525	0.000	2550.525	0.410		-2.00	-2.00	2550.435	4.500	2550.435	4.500
0+410				2550.313	2550.313	0.009	2550.322			-2.00	-2.00	2550.232	4.500	2550.232	4.500
0+420	2549.695	P.I.V	-0.01400	2550.100	2550.100	0.036	2550.136	0.441		-2.00	-2.00	2550.046	4.500	2550.046	4.500
0+430				2549.960	2549.888	0.082	2549.969			-2.00	-2.00	2549.879	4.500	2549.879	4.500
0+440	2549.440	P.T.V		2549.820	2549.675	0.145	2549.820	0.380		-2.00	-2.00	2549.730	4.500	2549.730	4.500
0+450				2549.680			2549.680			-2.00	-2.00	2549.590	4.500	2549.590	4.500
0+460	2549.121			2549.540			2549.540	0.419		-2.00	-2.00	2549.450	4.500	2549.450	4.500
0+470				2549.400			2549.400			-2.00	-2.00	2549.310	4.500	2549.310	4.500
0+480	2548.800			2549.260			2549.260	0.460		-2.00	-2.00	2549.170	4.500	2549.170	4.500
0+490				2549.120			2549.120			-2.00	-2.00	2549.030	4.500	2549.030	4.500
0+500	2548.498			2548.980			2548.980	0.482		-2.00	-2.00	2548.890	4.500	2548.890	4.500
0+510				2548.840			2548.840			-2.00	-2.00	2548.750	4.500	2548.750	4.500
0+520	2548.301			2548.700			2548.700	0.399		-2.00	-2.00	2548.610	4.500	2548.610	4.500
0+530				2548.560			2548.560			-2.00	-2.00	2548.470	4.500	2548.470	4.500
0+540	2548.049			2548.420			2548.420	0.371		-2.00	-2.00	2548.330	4.500	2548.330	4.500
0+550		P.C.V		2548.280	2548.280	0.000	2548.280			-2.00	-2.00	2548.190	4.500	2548.190	4.500
0+560	2547.731			2548.140	2548.140	0.010	2548.150	0.419		-2.00	-2.00	2548.060	4.500	2548.060	4.500
0+570		P.I.V	-0.00614	2548.000	2548.000	0.039	2548.039			-2.00	-2.00	2547.949	4.500	2547.949	4.500
0+580	2547.507			2547.939	2547.860	0.088	2547.948	0.441		-2.00	-2.00	2547.858	4.500	2547.858	4.500
0+590		P.T.V		2547.877	2547.720	0.157	2547.877			-2.00	-2.00	2547.787	4.500	2547.787	4.500
0+600	2547.331			2547.816			2547.816	0.485		-2.00	-2.00	2547.726	4.500	2547.726	4.500
0+610				2547.754			2547.754			-2.00	-2.00	2547.664	4.500	2547.664	4.500
0+620	2547.216			2547.693			2547.693	0.477		-2.00	-2.00	2547.603	4.500	2547.603	4.500
0+630				2547.631			2547.631			-2.00	-2.00	2547.541	4.500	2547.541	4.500
0+640	2547.176			2547.570			2547.570	0.394		-2.00	-2.00	2547.480	4.500	2547.480	4.500
0+650				2547.509			2547.509			-2.00	-2.00	2547.419	4.500	2547.419	4.500
0+660	2546.919			2547.447			2547.447	0.528		-2.00	-2.00	2547.357	4.500	2547.357	4.500
0+670				2547.386			2547.386			-2.00	-2.00	2547.296	4.500	2547.296	4.500
0+680	2546.924			2547.324			2547.324	0.400		-2.00	-2.00	2547.234	4.500	2547.234	4.500
0+690		P.C.V		2547.263	2547.263	0.000	2547.263			-2.00	-2.00	2547.173	4.500	2547.173	4.500
0+700	2546.745			2547.201	2547.201	-0.011	2547.190	0.445		-2.00	-2.00	2547.100	4.500	2547.100	4.500
0+710		P.I.V	-0.01533	2547.140	2547.140	-0.046	2547.094			-2.00	-2.00	2547.004	4.500	2547.004	4.500
0+720	2546.535			2546.987	2547.079	-0.103	2546.975	0.440		-1.91	-2.00	2546.889	4.500	2546.885	4.500
0+730		P.T.V		2546.833	2547.017	-0.184	2546.833			-0.48	-2.00	2546.812	4.500	2546.743	4.500
0+740	2546.156			2546.680			2546.680	0.524		0.94	-2.00	2546.722	4.500	2546.586	4.690
0+740.394	2546.138			2546.674			2546.674	0.536		1.00	-2.00	2546.719	4.500	2546.580	4.700
0+760	2545.870			2546.373			2546.373	0.503		2.00	-2.00	2546.463	4.500	2546.275	4.900
0+772.078	2545.630			2546.188			2546.188	0.558		1.00	-2.00	2546.233	4.500	2546.094	4.700
0+780	2545.559			2546.067			2546.067	0.508		-0.13	-2.00	2546.061	4.500	2545.977	4.500
0+790				2545.913			2545.913			-1.56	-2.00	2545.843	4.500	2545.823	4.500
0+800	2545.219			2545.760			2545.760	0.541		-2.00	-1.27	2545.670	4.500	2545.703	4.500
0+810		P.C.V		2545.607	2545.607	0.000	2545.607			-2.00	0.16	2545.516	4.530	2545.614	4.500
0+815.894	2544.857			2545.516	2545.516	0.004	2545.520	0.663		-2.00	1.00	2545.426	4.700	2545.565	4.500
0+820	2544.984			2545.453	2545.453	0.011	2545.464	0.480		-2.00	1.59	2545.368	4.820	2545.535	4.500
0+830		P.I.V	-0.00688	2545.300	2545.300	0.042	2545.342			-2.00	2.00	2545.244	4.900	2545.432	4.500
0+840	2544.750			2545.231	2545.147	0.095	2545.242	0.492		-2.00	2.00	2545.144	4.900	2545.332	4.500

**CALCULO DE RASANTES:
PROYECTO EJECUTIVO PARA LA PAVIMENTACION DEL CAMINO
SAN PEDRO EL ALTO - SAN PEDRO DE LOS BAÑOS
EJE PRINCIPAL**

EST.	ELEV. TERRENO NATURAL	OBS.	TANG. VERTICAL		CORRECCION CURVA VERTICAL		ELEV. RASANTE	E S P E S O R E S		BOMBEO EN %		ELEV. HOMBRO IZQ.		ELEV. HOMBRO DER.	
			PENDIENTE	COTAS	ELEV. TAN	C		CORTE	TERR.	IZQ	DER	PAV.	DIST.	PAV.	DIST
0+848.562	2544.709			2545.172	2545.015	0.157	2545.173	0.464		-2.00	1.00	2545.079	4.700	2545.218	4.500
0+850		P.T.V		2545.163	2544.993	0.169	2545.163			-2.00	0.79	2545.069	4.660	2545.198	4.500
0+860	2544.666			2545.094			2545.094	0.428		-2.00	-0.63	2545.004	4.500	2545.065	4.500
0+870				2545.025			2545.025			-2.00	-2.00	2544.935	4.500	2544.935	4.500
0+880	2544.562			2544.956			2544.956	0.394		-2.00	-2.00	2544.866	4.500	2544.866	4.500
0+890				2544.888			2544.888			-2.00	-2.00	2544.798	4.500	2544.798	4.500
0+900	2544.472			2544.819			2544.819	0.347		-2.00	-2.00	2544.729	4.500	2544.729	4.500
0+910				2544.750			2544.750			-2.00	-2.00	2544.660	4.500	2544.660	4.500
0+920	2544.215			2544.681			2544.681	0.466		-1.03	-2.00	2544.635	4.500	2544.591	4.500
0+934.241	2544.082			2544.583			2544.583	0.501		1.00	-2.00	2544.628	4.500	2544.489	4.700
0+940	2544.090			2544.544			2544.544	0.454		1.82	-2.00	2544.626	4.500	2544.447	4.860
0+950		P.C.V		2544.475	2544.475	0.000	2544.475			2.00	-2.00	2544.565	4.500	2544.377	4.900
0+960	2544.012			2544.406	2544.406	-0.012	2544.394	0.382		2.00	-2.00	2544.484	4.500	2544.296	4.900
0+970				2544.338	2544.338	-0.049	2544.288			2.00	-2.00	2544.378	4.500	2544.190	4.900
0+980	2543.670			2544.269	2544.269	-0.111	2544.157	0.487		2.00	-2.00	2544.247	4.500	2544.059	4.900
0+990		P.I.V	-0.02667	2544.200	2544.200	-0.198	2544.002			2.00	-2.00	2544.092	4.500	2543.904	4.900
1+000	2543.383			2543.933	2544.131	-0.309	2543.822	0.439		2.00	-2.00	2543.912	4.500	2543.724	4.900
1+010				2543.667	2544.063	-0.445	2543.617			2.00	-2.00	2543.707	4.500	2543.519	4.900
1+020	2542.941			2543.400	2543.994	-0.606	2543.388	0.447		2.00	-2.00	2543.478	4.500	2543.290	4.900
1+030		P.T.V		2543.133	2543.925	-0.792	2543.133			2.00	-2.00	2543.223	4.500	2543.035	4.900
1+040	2542.411			2542.867			2542.867	0.456		2.00	-2.00	2542.957	4.500	2542.769	4.900
1+050				2542.600			2542.600			2.00	-2.00	2542.690	4.500	2542.502	4.900
1+060	2541.959	P.C.V		2542.333	2542.333	0.000	2542.333	0.374		2.00	-2.00	2542.423	4.500	2542.235	4.900
1+070.825	2541.649			2542.045	2542.045	0.022	2542.067	0.418		2.00	-2.00	2542.157	4.500	2541.973	4.700
1+080	2541.412	P.I.V	-0.01160	2541.800	2541.800	0.075	2541.875	0.463		2.00	-2.00	2541.965	4.500	2541.785	4.500
1+090				2541.684	2541.533	0.169	2541.703			2.00	-2.00	2541.793	4.500	2541.611	4.570
1+099.871	2541.140			2541.569	2541.270	0.299	2541.569	0.429		2.00	-2.00	2541.659	4.500	2541.473	4.800
1+100	2541.140	P.T.V		2541.568	2541.267	0.301	2541.568	0.428		2.00	-2.00	2541.658	4.500	2541.472	4.800
1+110				2541.452			2541.452			3.25	-3.25	2541.598	4.500	2541.289	5.030
1+120	2540.954			2541.336			2541.336	0.382		3.64	-3.64	2541.500	4.500	2541.150	5.100
1+130				2541.220			2541.220			3.52	-3.52	2541.378	4.500	2541.041	5.080
1+140	2540.670			2541.104			2541.104	0.434		2.15	-2.15	2541.201	4.500	2541.000	4.850
1+142.106	2540.692			2541.080			2541.080	0.388		1.86	-2.00	2541.163	4.500	2540.984	4.800
1+160	2540.470			2540.872			2540.872	0.402		-0.70	-2.00	2540.841	4.500	2540.782	4.500
1+170				2540.756			2540.756			-2.00	-2.00	2540.666	4.500	2540.666	4.500
1+180	2540.137			2540.640			2540.640	0.503		-2.00	-2.00	2540.550	4.500	2540.550	4.500
1+190				2540.524			2540.524			-2.00	-2.00	2540.434	4.500	2540.434	4.500
1+200	2539.968			2540.408			2540.408	0.440		-2.00	-2.00	2540.318	4.500	2540.318	4.500
1+210		P.C.V		2540.292	2540.292	0.000	2540.292			-2.00	-2.00	2540.202	4.500	2540.202	4.500
1+220	2539.728			2540.176	2540.176	-0.010	2540.166	0.438		-2.00	-2.00	2540.076	4.500	2540.076	4.500
1+230		P.I.V	-0.01940	2540.060	2540.060	-0.039	2540.021			-2.00	-1.16	2539.931	4.500	2539.969	4.500
1+240	2539.447			2539.866	2539.944	-0.088	2539.856	0.409		-2.00	0.27	2539.765	4.550	2539.868	4.500
1+245.087	2539.336			2539.767	2539.885	-0.120	2539.765	0.429		-2.00	0.27	2539.674	4.550	2539.777	4.500
1+250		P.T.V		2539.672	2539.828	-0.156	2539.672			-2.00	1.70	2539.575	4.840	2539.749	4.500
1+250		P.C.V		2539.672	2539.672	0.000	2539.672			-2.00	1.70	2539.575	4.850	2539.749	4.500
1+260	2539.085			2539.478	2539.478	0.026	2539.504	0.419		-2.00	1.62	2539.408	4.820	2539.577	4.500

**CALCULO DE RASANTES:
PROYECTO EJECUTIVO PARA LA PAVIMENTACION DEL CAMINO
SAN PEDRO EL ALTO - SAN PEDRO DE LOS BAÑOS
EJE PRINCIPAL**

EST.	ELEV. TERRENO NATURAL	OBS.	TANG. VERTICAL		CORRECCION CURVA VERTICAL		ELEV. RASANTE	E S P E S O R E S		BOMBEO EN %		ELEV. HOMBRO IZQ.		ELEV. HOMBRO DER.	
			PENDIENTE	COTAS	ELEV. TAN	C		CORTE	TERR.	IZQ	DER	PAV.	DIST.	PAV.	DIST
1+264.358	2538.990			2539.393	2539.393	0.054	2539.447	0.457	-2.00	1.00	2539.353	4.700	2539.492	4.500	
1+270				2539.284	2539.284	0.105	2539.389		-2.00	0.19	2539.298	4.540	2539.397	4.500	
1+280	2538.756	P.I.V	0.01200	2539.090	2539.090	0.236	2539.326	0.570	-2.00	-1.51	2539.236	4.500	2539.258	4.500	
1+290				2539.210	2538.896	0.419	2539.315		-2.00	-2.00	2539.225	4.500	2539.225	4.500	
1+300	2538.677			2539.330	2538.702	0.654	2539.356	0.679	0.48	-2.00	2539.378	4.500	2539.264	4.620	
1+304.804	2538.733			2539.388	2538.609	0.786	2539.395	0.662	2.43	-2.43	2539.504	4.500	2539.271	5.100	
1+310		P.T.V		2539.450	2538.508	0.942	2539.450		4.66	-4.66	2539.660	4.500	2539.188	5.620	
1+320	2539.288			2539.570			2539.570	0.282	5.00	-5.00	2539.795	4.500	2539.285	5.700	
1+330				2539.690			2539.690		5.00	-5.00	2539.915	4.500	2539.405	5.700	
1+340	2539.548			2539.810			2539.810	0.262	5.00	-5.00	2540.035	4.500	2539.525	5.700	
1+352.627	2539.614			2539.962			2539.962	0.348	2.43	-2.43	2540.071	4.500	2539.838	5.100	
1+360	2539.653			2540.050			2540.050	0.397	-0.55	-2.00	2540.025	4.500	2539.960	4.500	
1+370				2540.170			2540.170		-2.00	-2.00	2540.080	4.500	2540.080	4.500	
1+380	2539.868			2540.290			2540.290	0.422	-2.00	-2.00	2540.200	4.500	2540.200	4.500	
1+390				2540.410			2540.410		-2.00	-2.00	2540.320	4.500	2540.320	4.500	
1+400	2540.126	P.C.V		2540.530	2540.530	0.000	2540.530	0.404	-2.00	-2.00	2540.440	4.500	2540.440	4.500	
1+410				2540.650	2540.650	0.024	2540.674		-2.00	-2.00	2540.584	4.500	2540.584	4.500	
1+420	2540.532			2540.770	2540.770	0.096	2540.866	0.334	-2.00	-2.00	2540.776	4.500	2540.776	4.500	
1+430				2540.890	2540.890	0.217	2541.107		-2.00	-2.00	2541.017	4.500	2541.017	4.500	
1+440	2541.028	P.I.V	0.05050	2541.010	2541.010	0.385	2541.395	0.367	-2.00	-2.00	2541.305	4.500	2541.305	4.500	
1+450				2541.515	2541.130	0.602	2541.732		-2.00	-2.00	2541.642	4.500	2541.642	4.500	
1+460	2541.609			2542.020	2541.250	0.866	2542.116	0.507	-2.00	1.34	2542.021	4.780	2542.177	4.500	
1+467.493	2541.895			2542.398	2541.340	1.096	2542.436	0.541	-3.78	3.78	2542.229	5.470	2542.606	4.500	
1+470				2542.525	2541.370	1.179	2542.549		-4.59	4.59	2542.298	5.470	2542.756	4.500	
1+480	2542.539	P.T.V		2543.030	2541.490	1.540	2543.030	0.491	-7.50	7.50	2542.573	6.100	2543.368	4.500	
1+490		P.C.V		2543.535	2543.535	0.000	2543.535		-7.50	7.50	2543.078	6.100	2543.873	4.500	
1+500	2543.636			2544.040	2544.040	-0.032	2544.008	0.372	-7.50	7.50	2543.551	6.100	2544.346	4.500	
1+510				2544.545	2544.545	-0.127	2544.418		-5.78	5.78	2544.087	5.730	2544.678	4.500	
1+516.175	2544.248			2544.857	2544.857	-0.217	2544.640	0.392	-3.78	3.78	2544.440	5.300	2544.810	4.500	
1+520	2544.361	P.I.V	0.01250	2545.050	2545.050	-0.285	2544.765	0.404	-2.54	2.54	2544.637	5.030	2544.879	4.500	
1+530				2545.175	2545.555	-0.507	2545.048		-2.00	-0.78	2544.958	4.500	2545.013	4.500	
1+540	2544.912			2545.300	2546.060	-0.792	2545.268	0.356	-2.00	-2.00	2545.178	4.500	2545.178	4.500	
1+550		P.T.V		2545.425	2546.565	-1.140	2545.425		-2.00	-2.00	2545.335	4.500	2545.335	4.500	
1+560	2545.154			2545.550			2545.550	0.396	-2.00	-2.00	2545.460	4.500	2545.460	4.500	
1+570				2545.675			2545.675		-2.00	-2.00	2545.585	4.500	2545.585	4.500	
1+580	2545.385	P.C.V		2545.800	2545.800	0.000	2545.800	0.415	-0.39	-2.00	2545.782	4.500	2545.710	4.500	
1+590				2545.925	2545.925	-0.023	2545.902		1.28	-2.00	2545.960	4.500	2545.807	4.760	
1+592.850	2545.385			2545.961	2545.961	-0.038	2545.923	0.538	1.75	-2.00	2546.002	4.500	2545.826	4.850	
1+600	2545.515	P.I.V	-0.00571	2546.050	2546.050	-0.091	2545.959	0.444	2.96	-2.96	2546.092	4.500	2545.808	5.090	
1+610				2545.993	2546.175	-0.205	2545.970		3.53	-3.53	2546.129	4.500	2545.787	5.200	
1+620	2545.360	P.T.V		2545.936	2546.300	-0.364	2545.936	0.576	3.09	-3.09	2546.075	4.500	2545.778	5.110	
1+627.941	2545.353			2545.891			2545.891	0.538	1.75	-1.75	2545.969	4.500	2545.806	4.850	
1+640	2545.252			2545.822			2545.822	0.570	-0.26	0.26	2545.810	4.500	2545.833	4.500	
1+650				2545.765			2545.765		-1.93	1.93	2545.678	4.500	2545.851	4.500	
1+660	2545.177			2545.708			2545.708	0.530	-2.00	2.00	2545.616	4.590	2545.798	4.500	
1+668.969	2545.175			2545.656			2545.656	0.481	-2.00	2.00	2545.560	4.800	2545.746	4.500	

**CALCULO DE RASANTES:
PROYECTO EJECUTIVO PARA LA PAVIMENTACION DEL CAMINO
SAN PEDRO EL ALTO - SAN PEDRO DE LOS BAÑOS
EJE PRINCIPAL**

EST.	ELEV. TERRENO NATURAL	OBS.	TANG. VERTICAL		CORRECCION CURVA VERTICAL		ELEV. RASANTE	E S P E S O R E S		BOMBEO EN %		ELEV. HOMBRO IZQ.		ELEV. HOMBRO DER.	
			PENDIENTE	COTAS	ELEV. TAN	C		CORTE	TERR.	IZQ	DER	PAV.	DIST.	PAV.	DIST
1+680	2545.145			2545.593			2545.593	0.448		-3.37	3.37	2545.423	5.050	2545.745	4.500
1+690				2545.536			2545.536			-3.08	3.08	2545.382	5.010	2545.675	4.500
1+698.932	2545.049			2545.485			2545.485	0.436		-2.00	1.86	2545.389	4.800	2545.569	4.500
1+700	2545.028			2545.479			2545.479	0.451		-2.00	1.70	2545.384	4.780	2545.556	4.500
1+710				2545.422			2545.422			-2.00	0.28	2545.331	4.540	2545.435	4.500
1+720	2544.957			2545.365			2545.365	0.408		-2.00	-1.15	2545.275	4.500	2545.313	4.500
1+730				2545.308			2545.308			-2.00	-2.00	2545.218	4.500	2545.218	4.500
1+740	2544.778			2545.251			2545.251	0.473		-2.00	-2.00	2545.161	4.500	2545.161	4.500
1+750				2545.194			2545.194			-2.00	-2.00	2545.104	4.500	2545.104	4.500
1+760	2544.724			2545.137			2545.137	0.413		-1.12	-2.00	2545.086	4.500	2545.047	4.500
1+770				2545.080			2545.080			0.88	-2.00	2545.119	4.500	2544.987	4.610
1+780	2544.504			2545.023			2545.023	0.519		2.94	-2.94	2545.155	4.500	2544.879	4.870
1+783.082	2544.484			2545.005			2545.005	0.521		3.59	-3.59	2545.166	4.500	2544.827	4.950
1+800	2544.384			2544.908			2544.908	0.524		7.18	-7.18	2545.231	4.500	2544.521	5.390
1+810				2544.851			2544.851			7.30	-7.30	2545.180	4.500	2544.457	5.400
1+820	2544.396			2544.794			2544.794	0.398		5.32	-5.32	2545.034	4.500	2544.520	5.160
1+828.165	2544.350			2544.748			2544.748	0.398		3.59	-3.59	2544.909	4.500	2544.570	4.950
1+840	2544.278	P.I.V	-0.00870	2544.680			2544.680	0.402		1.13	-2.00	2544.731	4.500	2544.587	4.650
1+850				2544.593			2544.593			-0.87	-2.00	2544.554	4.500	2544.503	4.500
1+860	2544.063			2544.506			2544.506	0.443		-2.00	-2.00	2544.416	4.500	2544.416	4.500
1+870				2544.419			2544.419			-2.00	-2.00	2544.329	4.500	2544.329	4.500
1+880	2543.938			2544.332			2544.332	0.394		-2.00	-2.00	2544.242	4.500	2544.242	4.500
1+890				2544.245			2544.245			-2.00	-2.00	2544.155	4.500	2544.155	4.500
1+900	2543.763			2544.158			2544.158	0.395		-2.00	-2.00	2544.068	4.500	2544.068	4.500
1+910				2544.071			2544.071			-2.00	-2.00	2543.981	4.500	2543.981	4.500
1+920	2543.573			2543.984			2543.984	0.411		-2.00	-2.00	2543.894	4.500	2543.894	4.500
1+930				2543.897			2543.897			-2.00	-2.00	2543.807	4.500	2543.807	4.500
1+940	2543.411	P.I.V	-0.01020	2543.810			2543.810	0.399		-2.00	-2.00	2543.720	4.500	2543.720	4.500
1+950				2543.708			2543.708			-2.00	-2.00	2543.618	4.500	2543.618	4.500
1+960	2543.153			2543.606			2543.606	0.453		-2.00	-2.00	2543.516	4.500	2543.516	4.500
1+970				2543.504			2543.504			-2.00	-2.00	2543.414	4.500	2543.414	4.500
1+980	2542.964			2543.402			2543.402	0.438		-2.00	-2.00	2543.312	4.500	2543.312	4.500
1+990				2543.300			2543.300			-2.00	-2.00	2543.210	4.500	2543.210	4.500
2+000	2542.719			2543.198			2543.198	0.479		-2.00	-2.00	2543.108	4.500	2543.108	4.500
2+010				2543.096			2543.096			-2.00	-2.00	2543.006	4.500	2543.006	4.500
2+020	2542.525			2542.994			2542.994	0.469		-2.00	-2.00	2542.904	4.500	2542.904	4.500
2+030				2542.892			2542.892			-2.00	-2.00	2542.802	4.500	2542.802	4.500
2+040	2542.386	P.I.V	-0.01244	2542.790			2542.790	0.404		-2.00	-2.00	2542.700	4.500	2542.700	4.500
2+050				2542.666			2542.666			-2.00	-2.00	2542.576	4.500	2542.576	4.500
2+060	2542.133			2542.541			2542.541	0.408		-2.00	-2.00	2542.451	4.500	2542.451	4.500
2+070				2542.417			2542.417			-2.00	-2.00	2542.327	4.500	2542.327	4.500
2+080	2541.887			2542.292			2542.292	0.405		-2.00	-2.00	2542.202	4.500	2542.202	4.500
2+090		P.C.V		2542.168	2542.168	0.000	2542.168			-2.00	-0.73	2542.078	4.500	2542.135	4.500
2+100	2541.475			2542.043	2542.043	-0.012	2542.032	0.557		-2.00	1.27	2541.938	4.700	2542.089	4.500
2+104.646	2541.346			2541.986	2541.986	-0.025	2541.960	0.614		-2.21	2.21	2541.853	4.850	2542.060	4.500
2+110				2541.919	2541.919	-0.047	2541.872			-3.35	3.35	2541.703	5.020	2542.022	4.500

**CALCULO DE RASANTES:
PROYECTO EJECUTIVO PARA LA PAVIMENTACION DEL CAMINO
SAN PEDRO EL ALTO - SAN PEDRO DE LOS BAÑOS
EJE PRINCIPAL**

EST.	ELEV. TERRENO NATURAL	OBS.	TANG. VERTICAL		CORRECCION CURVA VERTICAL		ELEV. RASANTE	E S P E S O R E S		BOMBEO EN %		ELEV. HOMBRO IZQ.		ELEV. HOMBRO DER.	
			PENDIENTE	COTAS	ELEV. TAN	C		CORTE	TERR.	IZQ	DER	PAV.	DIST.	PAV.	DIST
2+120	2541.040			2541.794	2541.794	-0.106	2541.688	0.648	-4.55	4.35	2541.452	5.200	2541.884	4.500	
2+130		P.I.V	-0.03133	2541.670	2541.670	-0.189	2541.481		-2.48	2.48	2541.360	4.890	2541.593	4.500	
2+131.249	2541.056			2541.631	2541.654	-0.201	2541.454	0.398	-2.21	2.21	2541.346	4.850	2541.553	4.500	
2+140	2540.848			2541.357	2541.546	-0.295	2541.250	0.402	-2.00	0.45	2541.159	4.570	2541.271	4.500	
2+150				2541.043	2541.421	-0.425	2540.996		-2.00	-1.55	2540.906	4.500	2540.926	4.500	
2+160	2540.317			2540.730	2541.297	-0.578	2540.718	0.401	-2.00	-2.00	2540.628	4.500	2540.628	4.500	
2+170		P.T.V		2540.417	2541.172	-0.756	2540.417		-2.00	-1.59	2540.327	4.500	2540.345	4.500	
2+180	2539.658			2540.103			2540.103	0.445	-2.00	0.41	2540.012	4.570	2540.122	4.500	
2+188.956	2539.396			2539.823			2539.823	0.427	-2.21	2.21	2539.716	4.850	2539.922	4.500	
2+200	2539.074	P.C.V		2539.477	2539.477	0.000	2539.477	0.403	-4.55	4.55	2539.240	5.200	2539.681	4.500	
2+210				2539.163	2539.163	-0.038	2539.125		-4.39	4.39	2538.898	5.170	2539.323	4.500	
2+220	2538.407	P.I.V	-0.06180	2538.850	2538.850	-0.152	2538.698	0.291	-2.26	2.26	2538.589	4.810	2538.799	4.500	
2.+220.250	2538.399			2538.835	2538.842	-0.156	2538.686	0.287	-2.21	2.21	2538.580	4.800	2538.785	4.500	
2+230				2538.232	2538.537	-0.343	2538.194		0.47	-0.47	2538.215	4.500	2538.172	4.560	
0+236.434	2537.223			2537.834	2538.335	-0.506	2537.830	0.607	2.21	-2.21	2537.929	4.500	2537.723	4.800	
2+240	2536.946	P.T.V		2537.614	2538.223	-0.609	2537.614	0.668	2.97	-2.97	2537.748	4.500	2537.468	4.930	
2+240	2536.946	P.C.V		2537.614	2537.614	0.000	2537.614	0.668	2.97	-2.97	2537.748	4.500	2537.468	4.930	
2+250				2536.996	2536.996	0.048	2537.044		4.55	-4.55	2537.248	4.500	2536.807	5.200	
2+260	2536.091			2536.378	2536.378	0.191	2536.569	0.478	4.55	-4.55	2536.773	4.500	2536.332	5.200	
2+270		P.I.V	-0.00460	2535.760	2535.760	0.429	2536.189		4.55	-4.55	2536.394	4.500	2535.952	5.200	
2+280	2535.631			2535.714	2535.142	0.763	2535.905	0.274	3.06	-3.06	2536.042	4.500	2535.752	4.980	
2+283.971	2535.583			2535.696	2534.897	0.922	2535.818	0.235	2.21	-2.21	2535.918	4.500	2535.711	4.850	
2+290				2535.668	2534.524	1.192	2535.716		0.99	-2.00	2535.760	4.500	2535.622	4.660	
2+300	2535.380	P.T.V		2535.622	2533.906	1.716	2535.622	0.242	-1.00	-2.00	2535.577	4.500	2535.532	4.500	
2+310				2535.576			2535.576		-2.00	-2.00	2535.486	4.500	2535.486	4.500	
2+320	2535.134			2535.530			2535.530	0.396	-2.00	-2.00	2535.440	4.500	2535.440	4.500	
2+330		P.C.V		2535.484	2535.484	0.000	2535.484		-2.00	-2.00	2535.394	4.500	2535.394	4.500	
2+340	2535.042			2535.438	2535.438	0.015	2535.453	0.411	-2.00	-2.00	2535.363	4.500	2535.363	4.500	
2+350				2535.392	2535.392	0.058	2535.450		-2.00	-2.00	2535.360	4.500	2535.360	4.500	
2+360	2535.130			2535.346	2535.346	0.131	2535.477	0.347	-2.00	-2.00	2535.387	4.500	2535.387	4.500	
2+370		P.I.V	0.01875	2535.300	2535.300	0.233	2535.534		-2.00	-2.00	2535.444	4.500	2535.444	4.500	
2+380	2535.330			2535.488	2535.254	0.365	2535.619	0.289	-2.00	-2.00	2535.529	4.500	2535.529	4.500	
2+390				2535.675	2535.208	0.525	2535.733		-2.00	-2.00	2535.643	4.500	2535.643	4.500	
2+400	2535.451			2535.863	2535.162	0.715	2535.877	0.426	-2.00	-2.00	2535.787	4.500	2535.787	4.500	
2+410		P.T.V		2536.050	2535.116	0.934	2536.050		-2.00	-2.00	2535.960	4.500	2535.960	4.500	
2+420	2535.809			2536.238			2536.238	0.428	-2.00	-2.00	2536.148	4.500	2536.148	4.500	
2+430		P.C.V		2536.425	2536.425	0.000	2536.425		-2.00	-2.00	2536.335	4.500	2536.335	4.500	
2+440	2536.283			2536.613	2536.613	-0.016	2536.597	0.314	-2.00	-2.00	2536.507	4.500	2536.507	4.500	
2+450		P.I.V	0.00625	2536.800	2536.800	-0.063	2536.738		-2.00	-2.00	2536.648	4.500	2536.648	4.500	
2+460	2536.383			2536.863	2536.988	-0.141	2536.847	0.464	-2.00	-2.00	2536.757	4.500	2536.757	4.500	
2+470		P.T.V		2536.925	2537.175	-0.250	2536.925		-2.00	-2.00	2536.835	4.500	2536.835	4.500	
2+470		P.C.V		2536.925	2536.925	0.000	2536.925		-2.00	-2.00	2536.835	4.500	2536.835	4.500	
2+480	2536.527			2536.988	2536.988	0.020	2537.008	0.481	-2.00	-2.00	2536.918	4.500	2536.918	4.500	
2+490		P.I.V	0.02250	2537.050	2537.050	0.081	2537.131		-2.00	-2.00	2537.041	4.500	2537.041	4.500	
2+500	2536.875			2537.275	2537.113	0.183	2537.295	0.420	-2.00	-2.00	2537.205	4.500	2537.205	4.500	
2+510		P.T.V		2537.500	2537.175	0.325	2537.500		-2.00	-2.00	2537.410	4.500	2537.410	4.500	

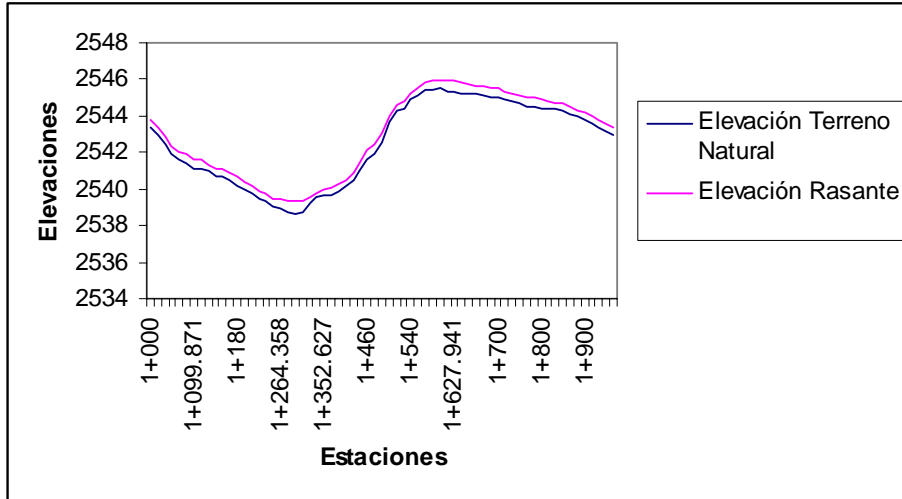
**CALCULO DE RASANTES:
PROYECTO EJECUTIVO PARA LA PAVIMENTACION DEL CAMINO
SAN PEDRO EL ALTO - SAN PEDRO DE LOS BAÑOS
EJE PRINCIPAL**

EST.	ELEV. TERRENO NATURAL	OBS.	TANG. VERTICAL		CORRECCION CURVA VERTICAL		ELEV. RASANTE	E S P E S O R E S		BOMBEO EN %		ELEV. HOMBRO IZQ.		ELEV. HOMBRO DER.	
			PENDIENTE	COTAS	ELEV. TAN	C		CORTE	TERR.	IZQ	DER	PAV.	DIST.	PAV.	DIST.
2+520	2537.339			2537.725			2537.725	0.386		-2.00	-2.00	2537.635	4.500	2537.635	4.500
2+530				2537.950			2537.950			-2.00	-2.00	2537.860	4.500	2537.860	4.500
2+540	2537.757			2538.175			2538.175	0.418		-2.00	-2.00	2538.085	4.500	2538.085	4.500
2+550		P.C.V		2538.400	2538.400	0.000	2538.400			-2.00	-2.00	2538.310	4.500	2538.310	4.500
2+560	2538.313			2538.625	2538.625	-0.022	2538.603	0.290		-2.00	-2.00	2538.513	4.500	2538.513	4.500
2+570		P.I.V	0.00500	2538.850	2538.850	-0.088	2538.763			-0.05	-2.00	2538.760	4.500	2538.673	4.500
2+580	2538.352			2538.900	2539.075	-0.197	2538.878	0.526		2.17	-2.17	2538.976	4.500	2538.772	4.880
2+590		P.T.V		2538.950	2539.300	-0.350	2538.950			3.67	-3.67	2539.115	4.500	2538.761	5.140
2+597.512	2538.534			2538.988			2538.988	0.454		2.00	-2.00	2539.078	4.500	2538.891	4.850
2+600	2538.594			2539.000			2539.000	0.406		1.45	-1.45	2539.065	4.500	2538.931	4.750
2+610				2539.050			2539.050			-0.78	0.78	2539.015	4.500	2539.085	4.500
2+620	2538.605			2539.100			2539.100	0.495		-2.00	2.00	2539.009	4.550	2539.190	4.500
2+627.837	2538.644			2539.139			2539.139	0.495		-2.00	2.00	2539.042	4.850	2539.229	4.500
2+640	2538.563			2539.200			2539.200	0.637		-3.97	3.97	2538.994	5.190	2539.379	4.500
2+648.85	2538.674			2539.244			2539.244	0.570		-2.00	2.00	2539.147	4.850	2539.334	4.500
2+660	2538.802			2539.300			2539.300	0.498		0.48	-0.48	2539.322	4.500	2539.278	4.510
2+669.660	2538.805			2539.348			2539.348	0.543		2.00	-2.00	2539.438	4.500	2539.254	4.700
2+680	2538.825	P.C.V		2539.400	2539.400	0.000	2539.400	0.575		2.00	-2.00	2539.490	4.500	2539.302	4.900
2+690				2539.450	2539.450	-0.014	2539.436			2.00	-2.00	2539.526	4.500	2539.341	4.750
2+692.354	2538.875			2539.462	2539.462	-0.021	2539.441	0.566		2.00	-2.00	2539.531	4.500	2539.347	4.700
2+700	2539.573	P.I.V	-0.00608	2539.500	2539.500	-0.055	2539.445	0.128		0.47	-2.00	2539.466	4.500	2539.354	4.550
2+710				2539.439	2539.550	-0.125	2539.425			-1.53	-2.00	2539.356	4.500	2539.335	4.500
2+720	2538.813	P.T.V		2539.378	2539.600	-0.222	2539.378	0.565		-2.00	-2.00	2539.288	4.500	2539.288	4.500
2+730				2539.318			2539.318			-2.00	-2.00	2539.228	4.500	2539.228	4.500
2+740	2538.796			2539.257			2539.257	0.461		-2.00	-2.00	2539.167	4.500	2539.167	4.500
2+750				2539.196			2539.196			-2.00	-2.00	2539.106	4.500	2539.106	4.500
2+760	2538.563			2539.135			2539.135	0.572		-2.00	-2.00	2539.045	4.500	2539.045	4.500
2+770				2539.074			2539.074			-2.00	-2.00	2538.984	4.500	2538.984	4.500
2+780	2538.563			2539.013			2539.013	0.450		-2.00	-2.00	2538.923	4.500	2538.923	4.500
2+790				2538.953			2538.953			-2.00	-2.00	2538.863	4.500	2538.863	4.500
2+800	2538.486			2538.892			2538.892	0.406		-2.00	-2.00	2538.802	4.500	2538.802	4.500
2+810				2538.831			2538.831			-2.00	-2.00	2538.741	4.500	2538.741	4.500
2+820	2538.429			2538.770			2538.770	0.341		-2.00	-2.00	2538.680	4.500	2538.680	4.500
2+830				2538.709			2538.709			-2.00	-2.00	2538.619	4.500	2538.619	4.500
2+840	2538.324			2538.648			2538.648	0.324		-2.00	-2.00	2538.558	4.500	2538.558	4.500
2+850				2538.588			2538.588			-2.00	-2.00	2538.498	4.500	2538.498	4.500
2+860	2538.163			2538.527			2538.527	0.364		-2.00	-2.00	2538.437	4.500	2538.437	4.500
2+870				2538.466			2538.466			-2.00	-2.00	2538.376	4.500	2538.376	4.500
2+880	2538.089			2538.405			2538.405	0.316		-2.00	-2.00	2538.315	4.500	2538.315	4.500
2+890				2538.344			2538.344			-2.00	-2.00	2538.254	4.500	2538.254	4.500
2+900	2537.890			2538.283			2538.283	0.393		-2.00	-2.00	2538.193	4.500	2538.193	4.500
2+910				2538.223			2538.223			-2.00	-2.00	2538.133	4.500	2538.133	4.500
2+920	2537.713			2538.162			2538.162	0.449		-2.00	-2.00	2538.072	4.500	2538.072	4.500
2+930				2538.101			2538.101			-2.00	-2.00	2538.011	4.500	2538.011	4.500
2+940	2537.684	P.I.V	-0.00495	2538.040			2538.040	0.356		-2.00	-2.00	2537.950	4.500	2537.950	4.500
2+950				2537.991			2537.991			-2.00	-2.00	2537.901	4.500	2537.901	4.500

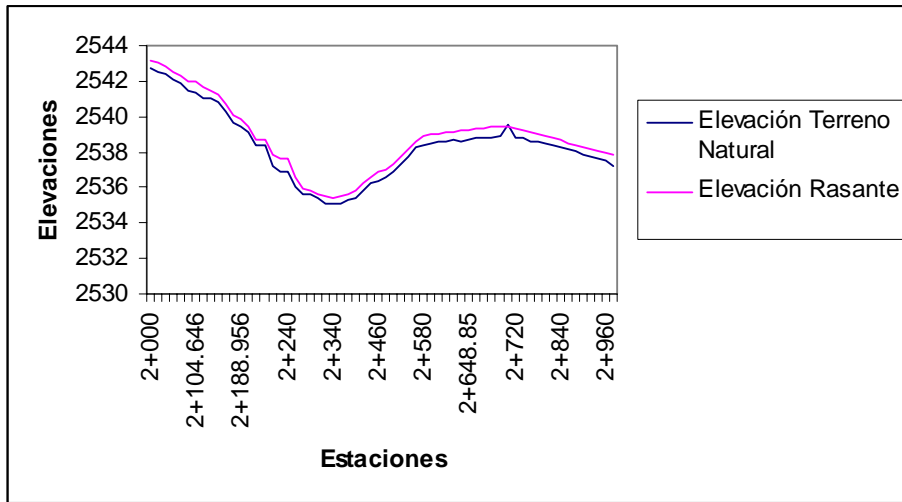
**CALCULO DE RASANTES:
 PROYECTO EJECUTIVO PARA LA PAVIMENTACION DEL CAMINO
 SAN PEDRO EL ALTO - SAN PEDRO DE LOS BAÑOS
 EJE PRINCIPAL**

EST.	ELEV. TERRENO NATURAL	OBS.	TANG. VERTICAL		CORRECCION CURVA VERTICAL		ELEV. RASANTE	E S P E S O R E S		BOMBEO EN %		ELEV. HOMBRO IZQ.		ELEV. HOMBRO DER.	
			PENDIENTE	COTAS	ELEV. TAN	C		CORTE	TERR.	IZQ	DER	PAV.	DIST.	PAV.	DIST
2+960	2537.515			2537.941			2537.941	0.426		-2.00	-2.00	2537.851	4.500	2537.851	4.500
2+970				2537.892			2537.892			-2.00	-2.00	2537.802	4.500	2537.802	4.500
2+980	2537.223			2537.842			2537.842	0.619		-2.00	-2.00	2537.752	4.500	2537.752	4.500
2+990				2537.793			2537.793			-2.00	-2.00	2537.703	4.500	2537.703	4.500
3+000	2537.096	P.S.T.V		2537.743			2537.743	0.647		-2.00	-2.00	2537.653	4.500	2537.653	4.500

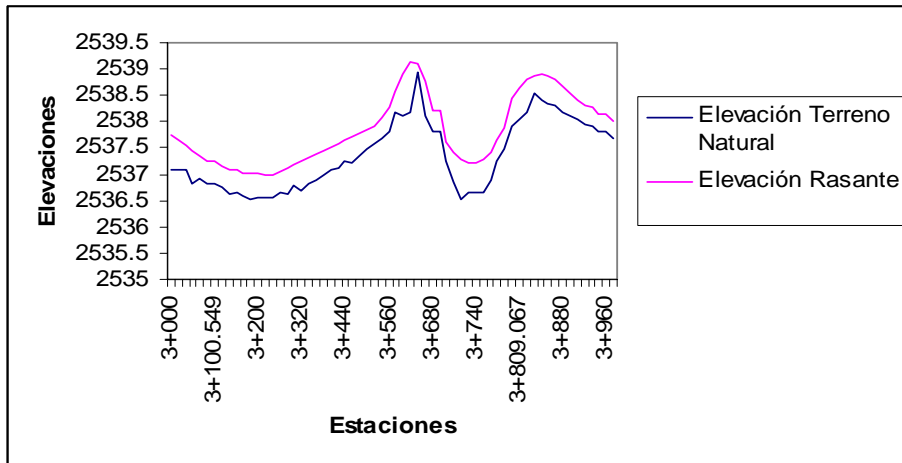
Anexo A Rasante



Anexo A Rasante Tamo 1+000 al 1+900

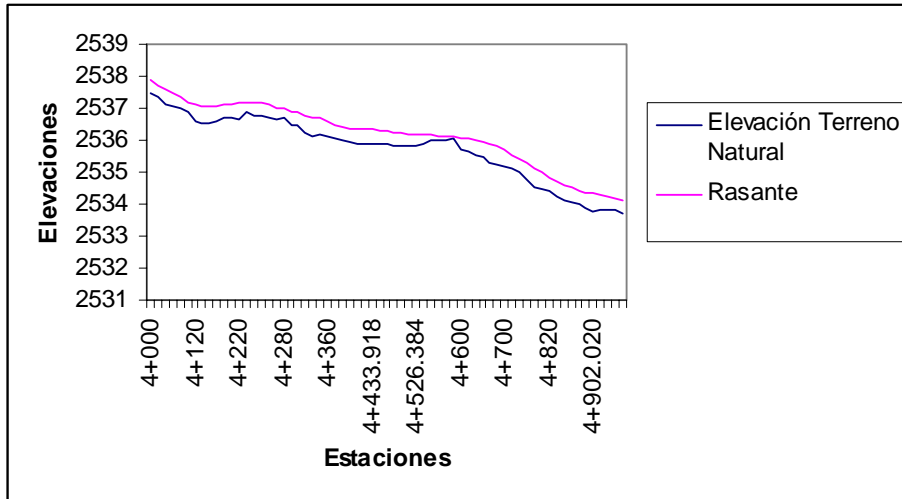


Anexo A Rasante Tramo 2+000 al 2+960

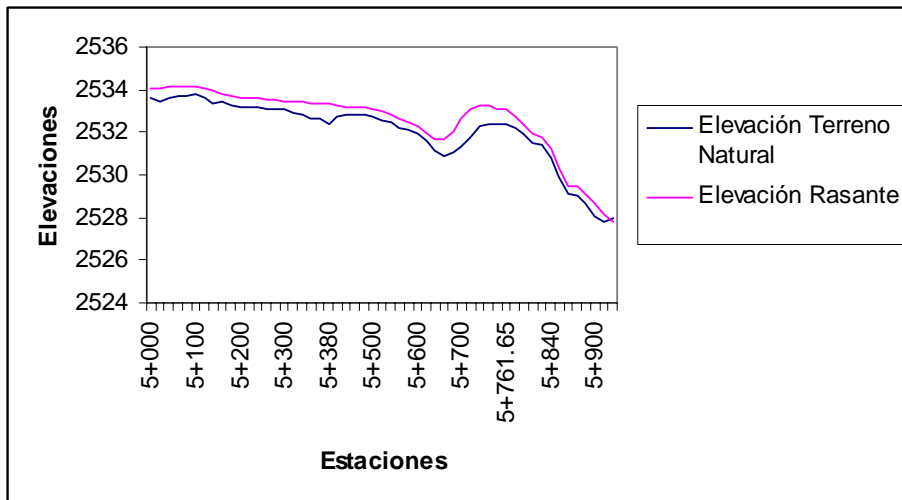


Anexo A Rasante Tramo 3+000 al 3+960

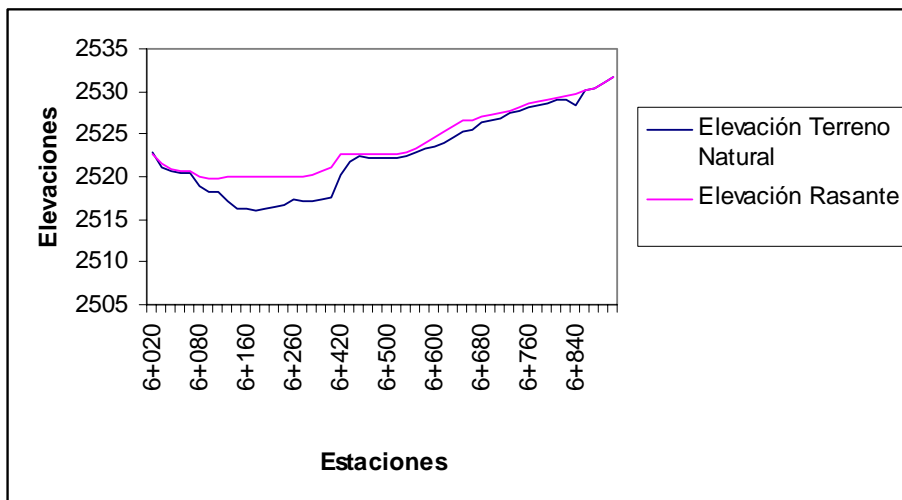
Anexo A Rasante



Anexo A Rasante Tramo 4+000 al 4+902.020



Anexo A Rasante Tramo 5+000 al 5+900



Anexo A Rasante Tramo 6+020 al 6+840