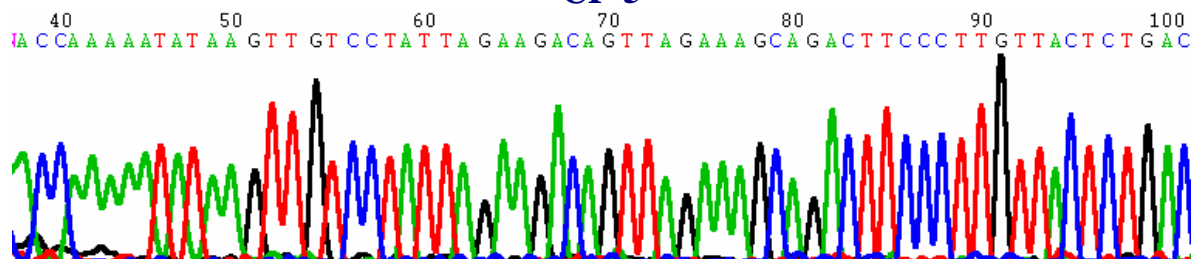
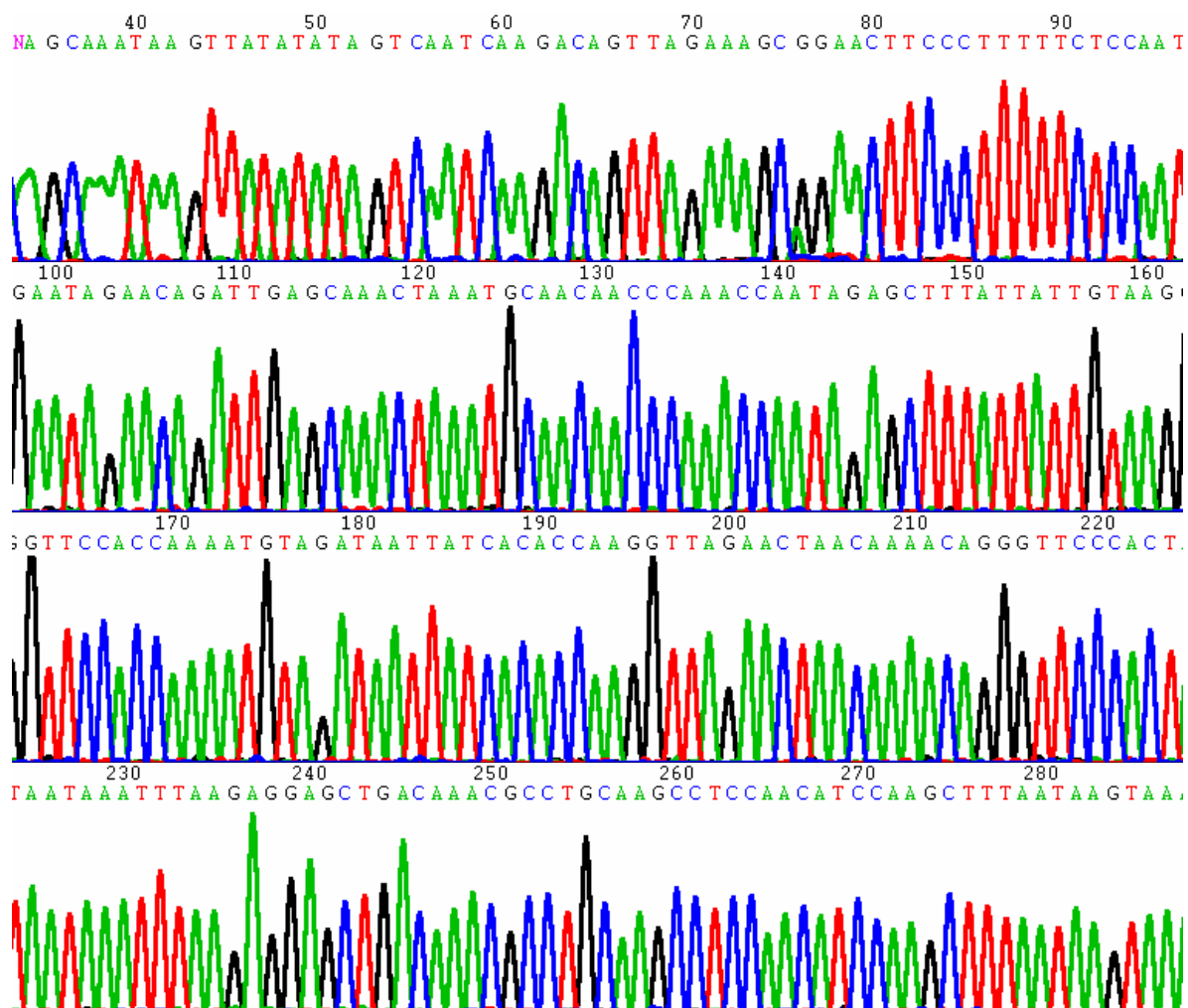


11.6 EDITED CHROMATOGRAPHS

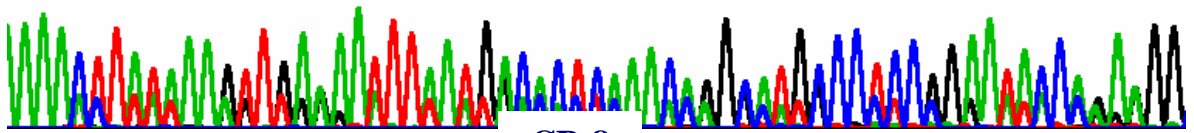
CP-5



CP-7

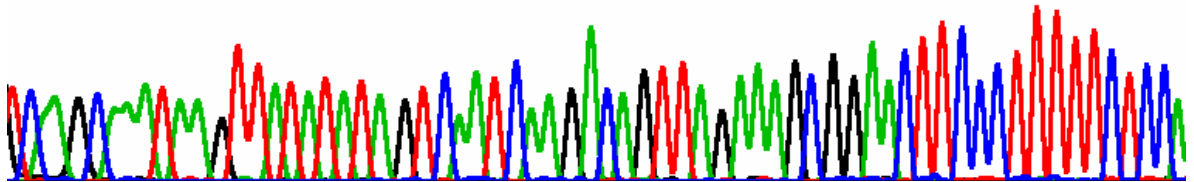


290 300 310 320 330 340 350
A A A A C T T A T A A A G T T G A N A A T T T A A T G A C A C T C A A A C A G G N N T G C C C T C C G G A A T A C C A N A N G G

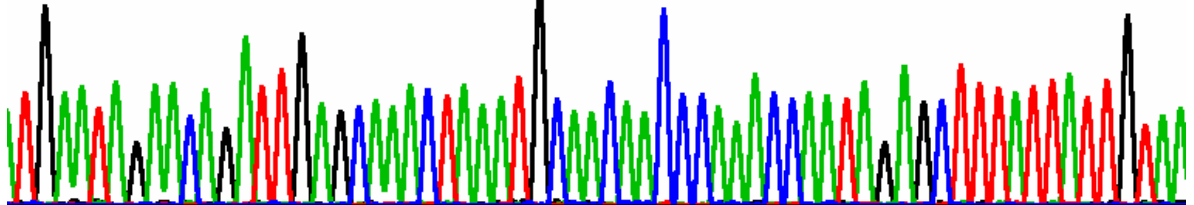


CP-8

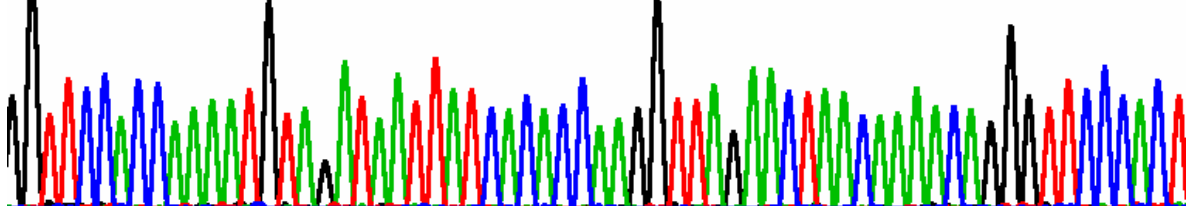
40 50 60 70 80 90
N C A A G C A A A T A A G T T A T A T A T A G T C A A T C A A G A C A G T T A G A A A G C G G A A C T T C C C T T T T T C T C C A



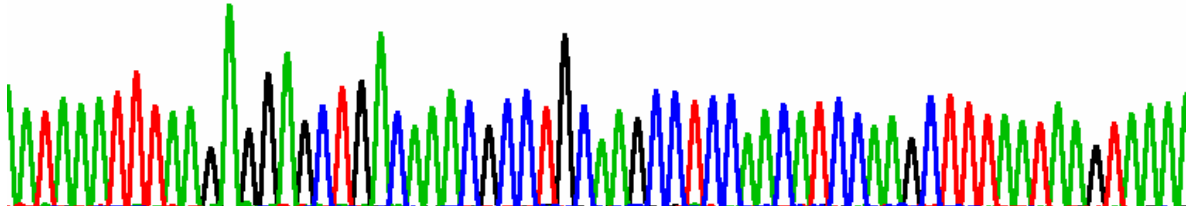
100 110 120 130 140 150 160
T G A A T A G A A C A G A T T G A G C A A A C T A A A T G C A A C A A C C C A A A C C A A T A G A G C T T T A T A T T G T A A



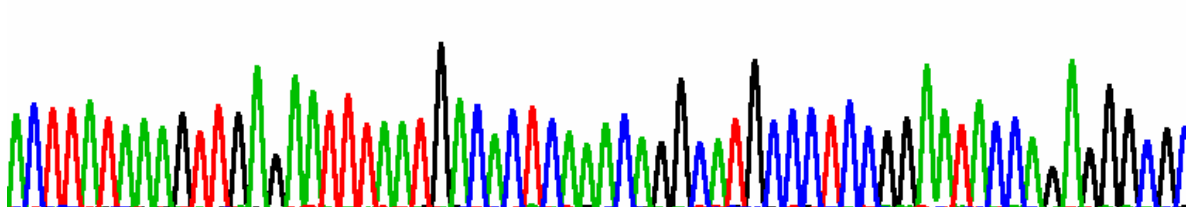
170 180 190 200 210 220
G G T T C C A C C A A A T G T A G A T A A T T A T C A C A C C A A G G T T A G A A C T A A C A A A C A G G G T T C C C A C T



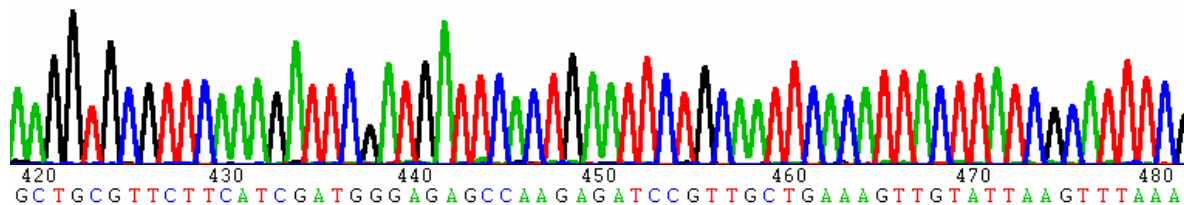
230 240 250 260 270 280 290
A T A A A T T T A A G A G G A G C T G A C A A A C G C C T G C A A G C C T C C A A C A T C C A A G C T T T A A T A A G T A A A



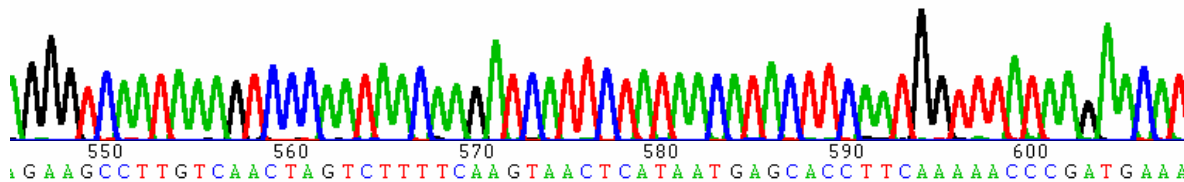
300 310 320 330 340 350
A C T T A T A A A G T T G A G A A T T T A A T G A C A C T C A A A C A G G C A T G C C C T C C G G A A T A C C A G A G G G C G C



360 370 380 390 400 410
A A G G T G C G T T C A A A G A T T C G A T G A T T C A C T G A A T T C T G C A A T T C A C A T T A C T T A T C G C A T T T C C

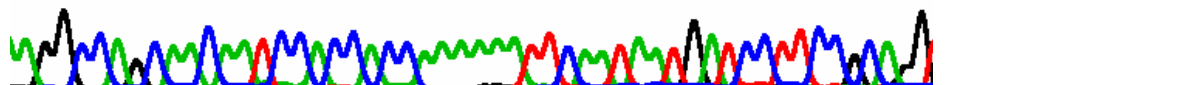


490 500 510 520 530 540
A G G G T C A A T A A A G T C C C A A T A A C A A G A T C A T T C T A T A A C A T A C T T C A A T G G T T T A T A A G A A C A T



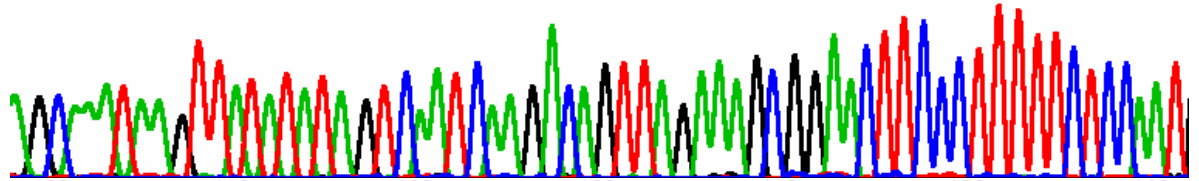
610 620 630 640 650 660 670
A A A C T C C T A C A A A A A G T G C A C A G G T G G A T G A A T A G A A A T C G G A G G A G G A T G T G C A C A T A C C C A A A

680 690 700 710 720
A G G C C A G C A A C A A T C C A C C A C C A A A A A A T T C A A T A A T G A T C C T T C C G C A N N

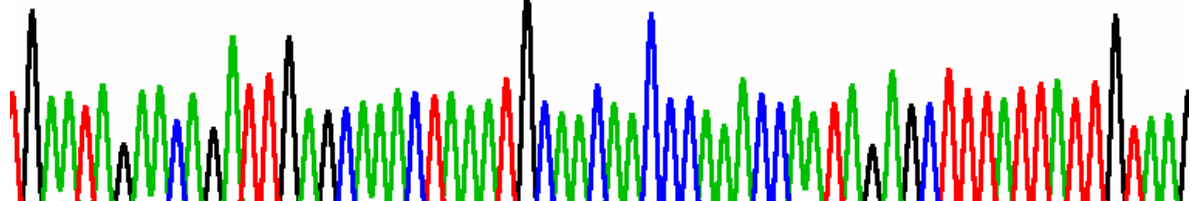


CP- 9

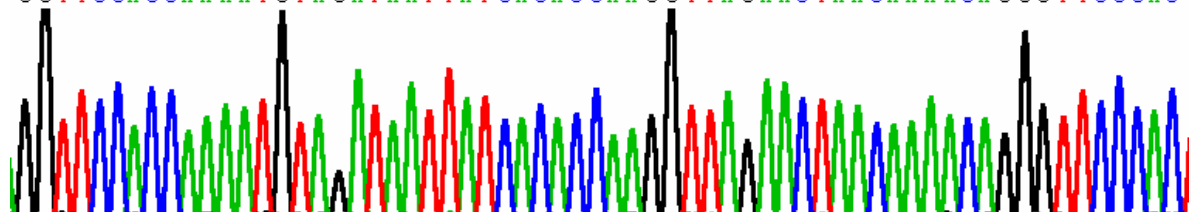
40 50 60 70 80 90
A G C A A A T A A G T T A T A T A T A G T C A A T C A A G A C A G T T A G A A A G C G G A A C T T C C C T T T T T C T C C A A T



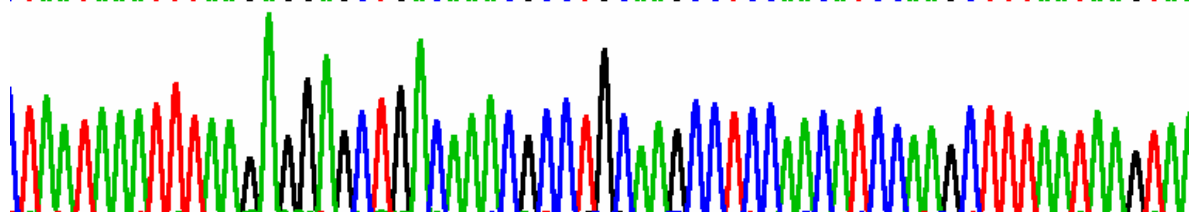
100 110 120 130 140 150 160
T G A A T A G A A C A G A T T G A G C A A A C T A A A T G C A A C A A C C C A A A C C A A T A G A G C T T T A T T A T T G T A A C



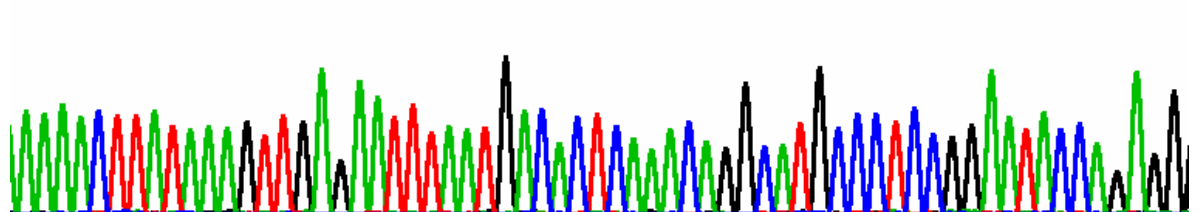
170 180 190 200 210 220
G G T T C C A C C A A A A T G T A G A T A A T T A T C A C A C C A A G G T T A G A A C T A A C A A A C A G G G T T C C C A C



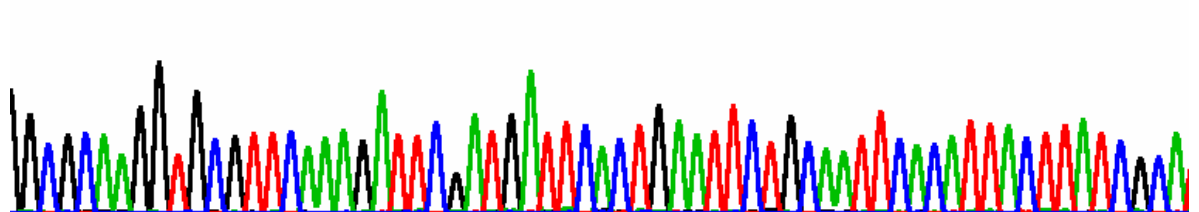
230 240 250 260 270 280
T A A T A A A T T T A A G A G G A G C T G A C A A A C G C C T G C A A G C C T C C A A C A T C C A A G C T T T A A T A A G T A A



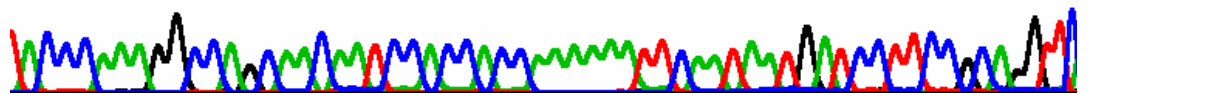
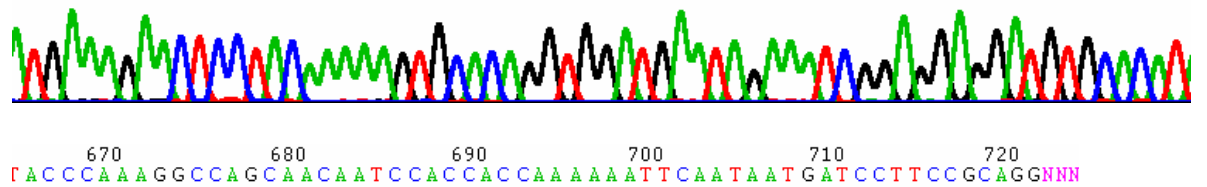
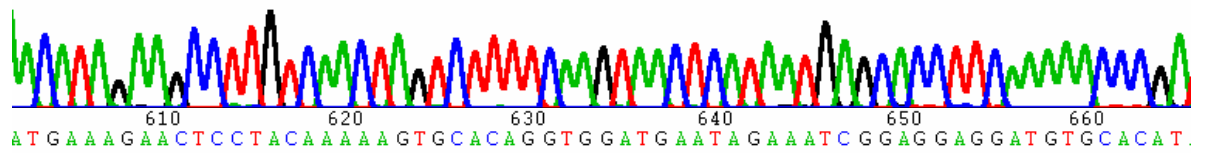
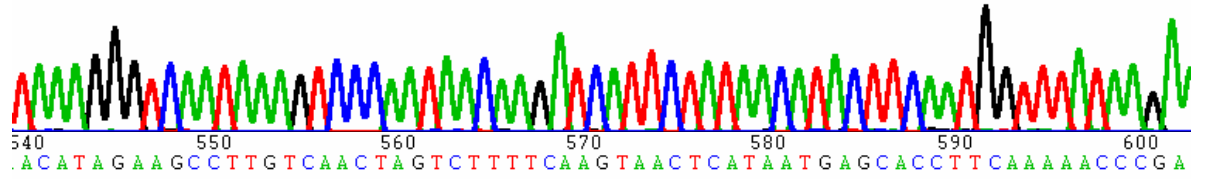
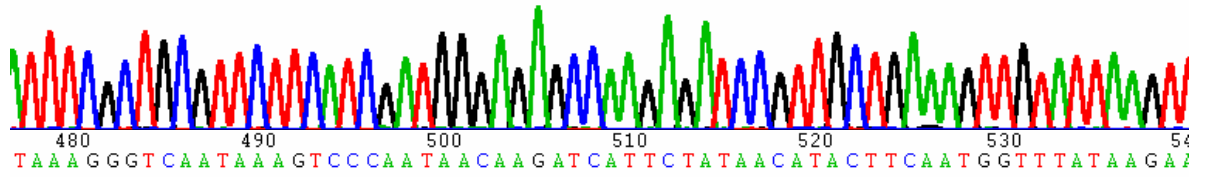
290 300 310 320 330 340 350
A A A A C T T A T A A A G T T G A G A T T T A A T G A C A C T C A A A C A G G C A T G C C C T C C G G A A T A C C A G A G G



350 360 370 380 390 400 410
G C G C A A G G T G C G T T C A A A G A T T C G A T G A T T C A C T G A A T T C T G C A A T T C A C A T T A C T T A T C G C A

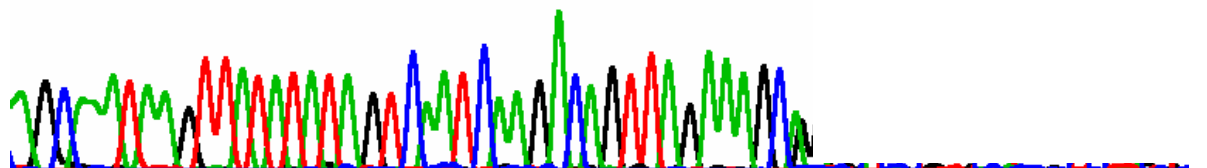


420 430 440 450 460 470
A T T T C G C T G C G T T C T T C A T C G A T G G G A G A G C C A A G A G A T C C G T T G C T G A A A G T T G T A T T A A G T T

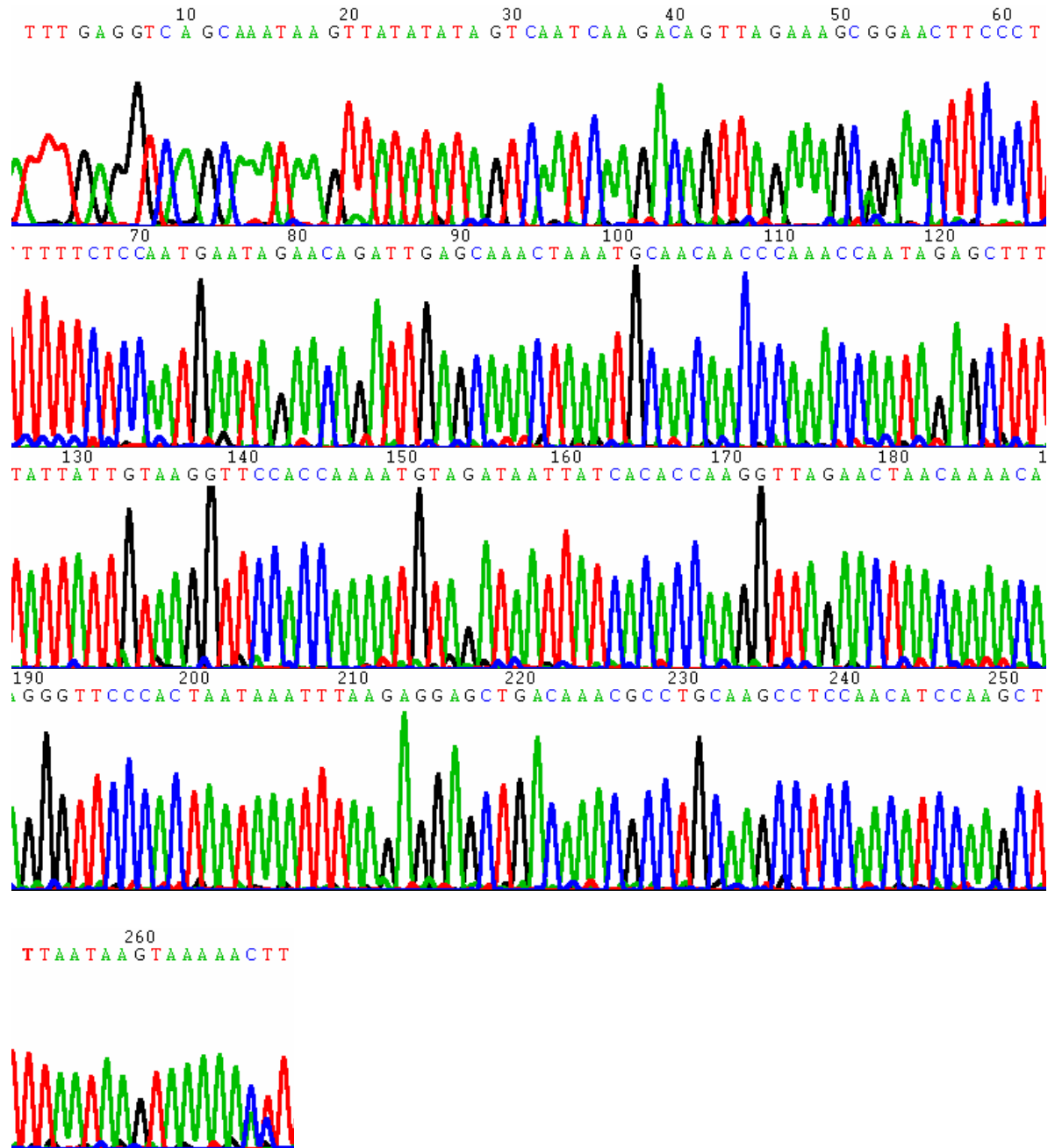


CP-13

40 50 60 70
T A G C A A A T A A G T T A T A T A T A G T C A A T C A A G A C A G T T A G A A A G C N

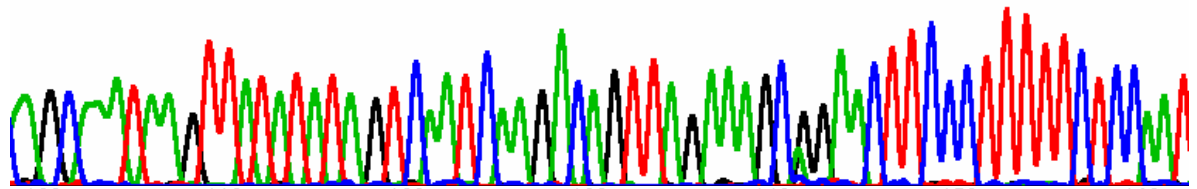


CP-95

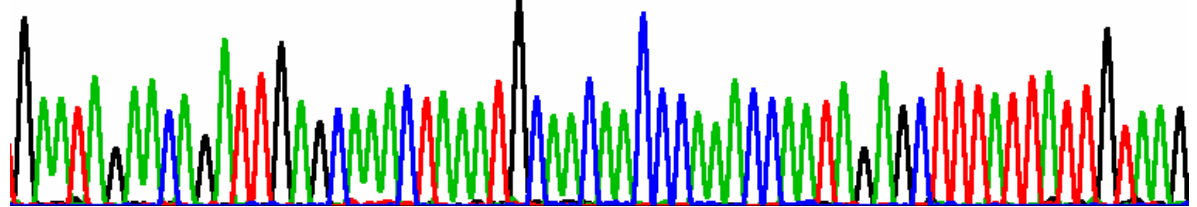


CP- 163

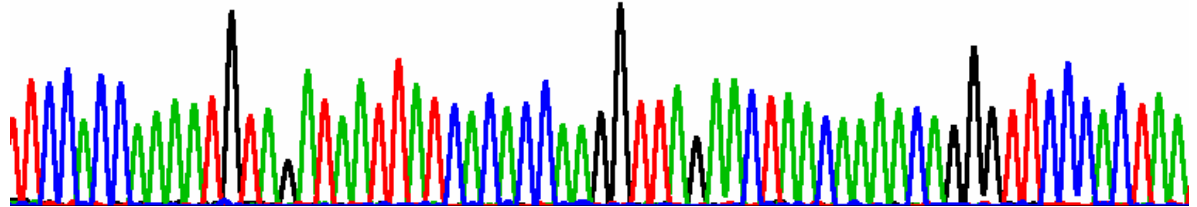
40 50 60 70 80 90
NA GCAAATAA GTTATATATA GTCAATCAA GACA GTTAGAAA GC GGAACTTCCCTTTTCTCCAAT



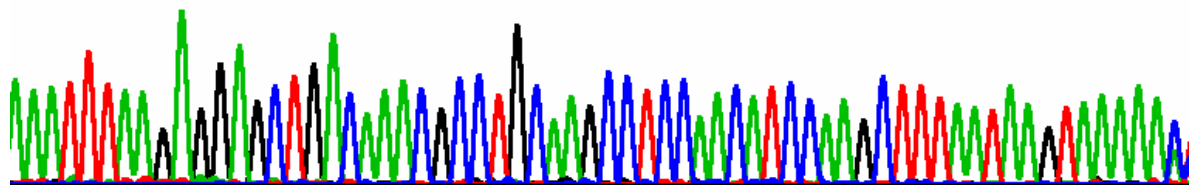
100 110 120 130 140 150 160
GAAATAGAACAGATTGAGCAAACCTAAATGCAACCAACCCTAAGAGCTTTTATTATTGTAAG



170 180 190 200 210 220
TTCCACCAAATGTAGATAATTATCACACCAAGGTTAGAACTAACAAAACAGGGTTCCCACTAA

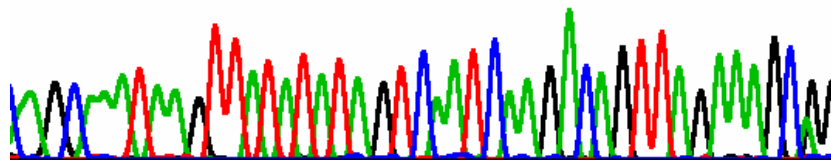


230 240 250 260 270 280 290
AAATTTAAGAGGAGCTGACAAACGCCTGCAAGCCTCCAAACATCCAAAGCTTTAATAAGTAAAAAC'

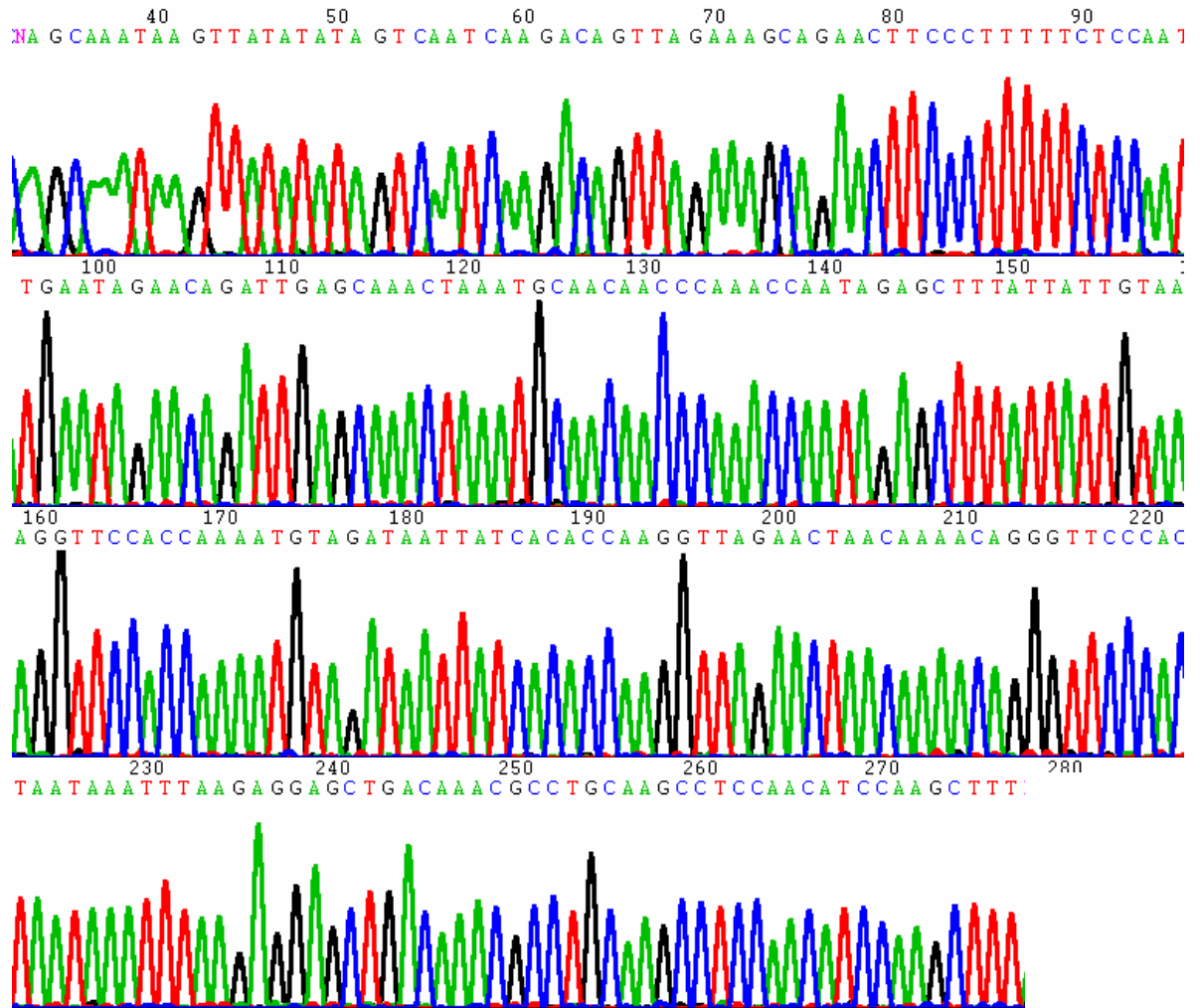


CP-172

30 40 50 60 70
NA GCAAATAA GTTATATATA GTCAATCAA GACA GTTAGAAA GCN N



CP-188



CP- 189

