

ANEXO 9

REGRESIÓN FUENTES DE EMPLEO vs. PEA, PIB, POB 12 y mas

Los datos son los siguientes:

Periodo	Fuentes de empleo	PIB	PEA	Pob 12 y más
1991	19957571	1189016973	31229048	58317249
1992	20294459	1232162341	32440430	59658722
1993	20631347	1256195971	33651812	61000194
1994	20717181	1311661116	34605148	62491145
1995	20803014	1230771052	35558484	63982096
1996	21853765	1294196562	36580746	66037955
1997	23539746	1381839196	38344658	67702002
1998	24547736	1451350909	39562404	69537053
1999	25542984	1503930030	39648333	70818567
2000	27701281	1602542837	40161543	72137537
2001	27631150	1599787373	40072856	73577159
2002	28861652	1618085765	41085736	75352912
2003	30799292	1669603457	41515672	76863320

Tabla 1. Datos para la regresión múltiple a nivel nacional.

Regression Summary
Fuentes de Empleo vs. 3 Independents

Count	13
Num. Missing	0
R	.994
R Squared	.988
Adjusted R Squared	.984
RMS Residual	465920.684

ANOVA Table
Fuentes de Empleo vs. 3 Independents

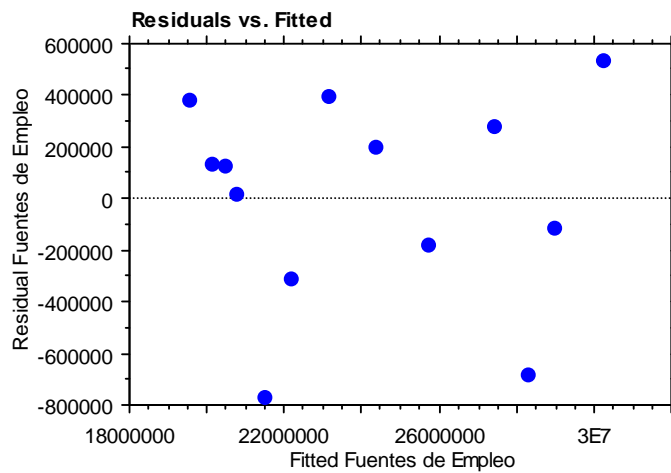
	DF	Sum of Squares	Mean Square	F-Value	P-Value
Regression	3	1.647E14	5.488E13	252.829	<.0001
Residual	9	1.954E12	217082084140.593		
Total	12	1.666E14			

Regression Coefficients
Fuentes de Empleo vs. 3 Independents

	Coefficient	Std. Error	Std. Coeff.	t-Value	P-Value
Intercept	-10720220.046	2017761.291	-10720220.046	-5.313	.0005
PIB	.012	.003	.573	3.856	.0039
PEA	-.635	.211	-.591	-3.008	.0148
Pob 12 y mas	.607	.168	.998	3.609	.0057

Residual Statistics
Fuentes de Empleo vs. 3 Independents

# >= 0	8
# < 0	5
SS[e(i) - e(i-1)]	4.192E12
Durbin-Watson	2.146
Serial Autocorrelation	-.184



REGRESIÓN FUENTES DE EMPLEO vs. PIB

Regression Summary

Fuentes de Empleo vs. PIB

Count	13
Num. Missing	0
R	.986
R Squared	.971
Adjusted R Squared	.969
RMS Residual	659798.525

ANOVA Table

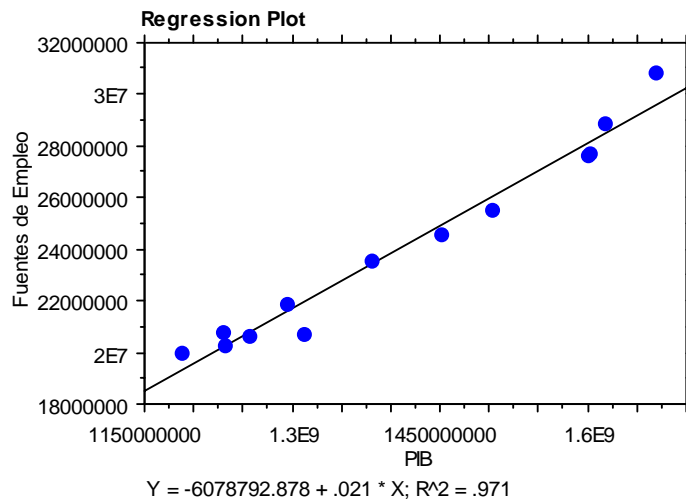
Fuentes de Empleo vs. PIB

	DF	Sum of Squares	Mean Square	F-Value	P-Value
Regression	1	1.618E14	1.618E14	371.712	<.0001
Residual	11	4.789E12	435334093827.960		
Total	12	1.666E14			

Regression Coefficients

Fuentes de Empleo vs. PIB

	Coefficient	Std. Error	Std. Coeff.	t-Value	P-Value
Intercept	-6078792.878	1574303.628	-6078792.878	-3.861	.0026
PIB	.021	.001	.986	19.280	<.0001



REGRESIÓN PIB vs. TIEMPO

Regression Summary

PIB vs. Tiempo

Count	13
Num. Missing	0
R	.967
R Squared	.934
Adjusted R Squared	.928
RMS Residual	45970972.461

ANOVA Table

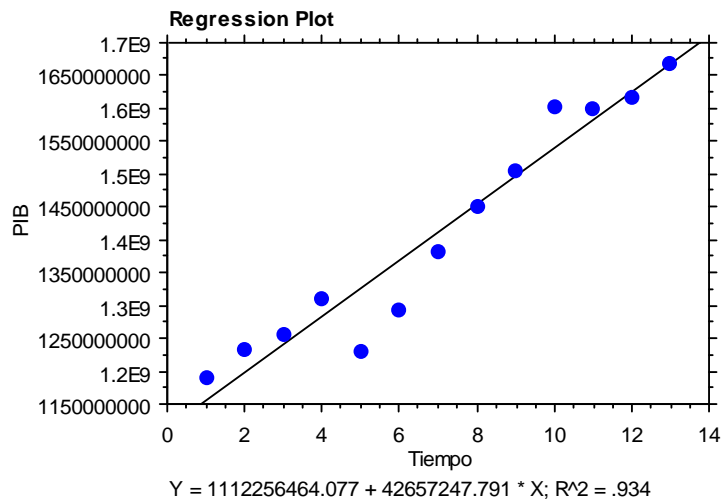
PIB vs. Tiempo

	DF	Sum of Squares	Mean Square	F-Value	P-Value
Regression	1	3.312E17	3.312E17	156.707	<.0001
Residual	11	2.325E16	2.113E15		
Total	12	3.544E17			

Regression Coefficients

PIB vs. Tiempo

	Coefficient	Std. Error	Std. Coeff.	t-Value	P-Value
Intercept	1112256464.077	27046948.343	1112256464.077	41.123	<.0001
Tiempo	42657247.791	3407595.192	.967	12.518	<.0001



Los datos para Puebla son:

Puebla			
Fuentes de Empleo	PIB	PEA	Pob 12 y más
844890	4.7	1691461	3177100
900814	5	1775647	3327289
956737	5.2	1859833	3477477
1041680	5.3	1930769	3572630
1126622	5.4	2001705	3667783
1162003	5.6	2094173	3767410
1197384	5.8	2186640	3867037

Tabla 2. Datos para la regresión en Puebla.

REGRESIÓN FUENTES DE EMPLEO vs. PIB, Pob 12 y mas

Regression Summary

Fuentes de Empleo vs. 2 Independents

Count	7
Num. Missing	0
R	.995
R Squared	.990
Adjusted R Squared	.986
RMS Residual	16271.830

ANOVA Table

Fuentes de Empleo vs. 2 Independents

	DF	Sum of Squares	Mean Square	F-Value	P-Value
Regression	2	110119652624.653	55059826312.327	207.951	<.0001
Residual	4	1059089860.776	264772465.194		
Total	6	111178742485.429			

Regression Coefficients

Fuentes de Empleo vs. 2 Independents

	Coefficient	Std. Error	Std. Coeff.	t-Value	P-Value
Intercept	-941024.538	97191.099	-941024.538	-9.682	.0006
PIB	-420849.917	167225.660	-1.135	-2.517	.0656
Pob 12 y mas	1.182	.252	2.116	4.692	.0094

Regression Summary
Fuentes de Empleo vs. Pob 12 y mas

Count	7
Num. Missing	0
R	.988
R Squared	.975
Adjusted R Squared	.970
RMS Residual	23392.499

ANOVA Table
Fuentes de Empleo vs. Pob 12 y mas

	DF	Sum of Squares	Mean Square	F-Value	P-Value
Regression	1	108442697364.997	108442697364.997	198.174	<.0001
Residual	5	2736045120.431	547209024.086		
Total	6	111178742485.429			

Regression Coefficients
Fuentes de Empleo vs. Pob 12 y mas

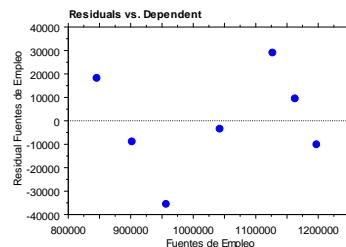
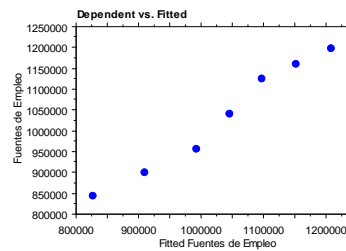
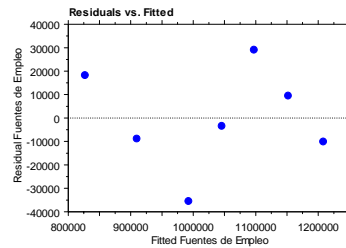
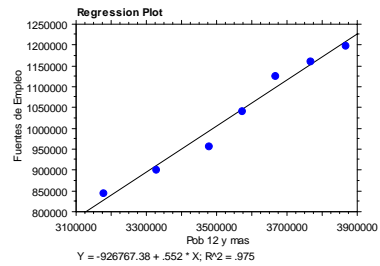
	Coefficient	Std. Error	Std. Coeff.	t-Value	P-Value
Intercept	-926767.380	139485.058	-.926767.380	-6.644	.0012
Pob 12 y mas	.552	.039	.988	14.077	<.0001

Confidence Intervals
Fuentes de Empleo vs. Pob 12 y mas

	Coefficient	95% Lower	95% Upper
Intercept	-926767.380	-1285325.135	-568209.625
Pob 12 y mas	.552	.451	.653

Residual Statistics
Fuentes de Empleo vs. Pob 12 y mas

# >= 0	3
# < 0	4
SS[e(i) - e(i-1)]	4325505122.071
Durbin-Watson	1.581
Serial Autocorrelation	.130



FUENTES DE EMPLEO vs. Población 12 y más